

Product datasheet for **AM01362PU-N**

IL12A Mouse Monoclonal Antibody

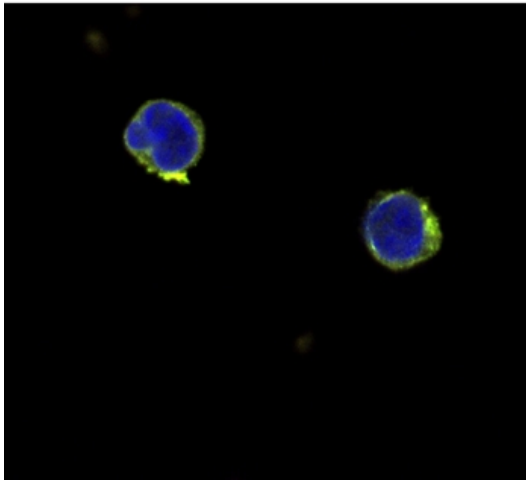
Product data:

Product Type:	Primary Antibodies
Applications:	ELISA, IF, WB
Recommended Dilution:	ELISA: In a Sandwich ELISA (assuming 100 µl/well), a concentration of 2.0-4.0 µg/ml of this antibody will detect at least 1000 pg/ml of recombinant Human IL-12 when used with Biotin anti-Human IL-12 antibody (<i>Cat.-No</i> PP1102B1 or PP1102B2) as the detection antibody at a concentration of at least 0.25-0.5 µg/ml. Western Blot: To detect Human IL-12 by Western Blot analysis this antibody can be used at a concentration of 0.50-1.0 µg/ml. Used in conjunction with compatible secondary reagents the detection limit for recombinant Human IL-12 is 0.5-1.0 ng/lane, under non-reducing conditions. Immunohistochemistry: This antibody stained PBMC. The primary antibody was incubated at 10.0 µg/ml for one hour at room temperature followed by a fluorescent labeled secondary antibody. <i>Protocol and staining provided by Dr. Lauren Binge, Laboratory of Prof. Charles Mackay, Monash Univeristy, Australia.</i>
Reactivity:	Human
Host:	Mouse
Isotype:	IgG1
Clonality:	Monoclonal
Immunogen:	<i>CHO cells</i> derived Highly pure (>98%) 75.0 kDa Recombinant Human IL-12 (<i>Cat.-No</i> PA086).
Specificity:	This antibody detects Human Interleukin-12. Other species not tested.
Formulation:	PBS without preservatives State: Azide Free State: Lyophilized (sterile filtered) IgG fraction from Ascites
Reconstitution Method:	Restore in sterile water to a concentration of 1.0 mg/ml.
Purification:	Affinity Chromatography on Protein A
Conjugation:	Unconjugated



[View online »](#)

Storage:	Store lyophilized at 2-8°C for 6 months or at -20°C long term. After reconstitution store the antibody undiluted at 2-8°C for one month or (in aliquots) at -20°C long term. Avoid repeated freezing and thawing.
Stability:	Shelf life: one year from despatch.
Gene Name:	interleukin 12A
Database Link:	Entrez Gene 3592 Human P29459
Background:	IL-12 is a potent regulator of cell mediated immune responses and it induces IFN- γ production by NK and T cells. It is produced by activated monocytes/macrophage cells, B lymphocytes and connective tissue type mast cells. Among its biological activities IL-12 promotes the growth and activity of activated NK, CD4 ⁺ and CD8 ⁺ cells and induces the development of IFN-Gamma producing Th1 cells.
Synonyms:	IL-12A, IL-12 subunit p35, NKSF1, CLMF p35
Protein Families:	Druggable Genome, Secreted Protein
Protein Pathways:	Allograft rejection, Cytokine-cytokine receptor interaction, Jak-STAT signaling pathway, RIG-I-like receptor signaling pathway, Toll-like receptor signaling pathway, Type I diabetes mellitus

Product images:

Immunohistochemistry using Interleukin-12 alpha / IL12A Antibody Cat.-No AM01362PU-N