

Product datasheet for **AM01329PU-N**

C4BPA Mouse Monoclonal Antibody [Clone ID: 10-07]

Product data:

| | |
|-----------------------|--|
| Product Type: | Primary Antibodies |
| Clone Name: | 10-07 |
| Applications: | ELISA, IHC |
| Recommended Dilution: | ELISA. Immunohistochemistry on Paraffin Sections: 5 µg/ml. Heat induced antigen retrieval in pH 6.0 citrate buffer is recommended. |
| Reactivity: | Human |
| Host: | Mouse |
| Isotype: | IgG2b |
| Clonality: | Monoclonal |
| Immunogen: | Native Human C4 binding protein. |
| Specificity: | This antibody recognizes complement component 4 binding protein (C4bp). |
| Formulation: | Borate buffered saline, pH 8.4 containing 0.02% Sodium Azide as preservative. State: Purified State: Liquid purified Ig fraction. |
| Concentration: | lot specific |
| Purification: | Affinity Chromatography on Protein A. |
| Conjugation: | Unconjugated |
| Storage: | Store the antibody undiluted at 2-8°C for one month or (in aliquots) at -20°C for longer. Avoid repeated freezing and thawing. |
| Stability: | Shelf life: one year from despatch. |
| Gene Name: | Homo sapiens complement component 4 binding protein alpha (C4BPA) |
| Database Link: | Entrez Gene 722 Human P04003 |



[View online »](#)

Background:

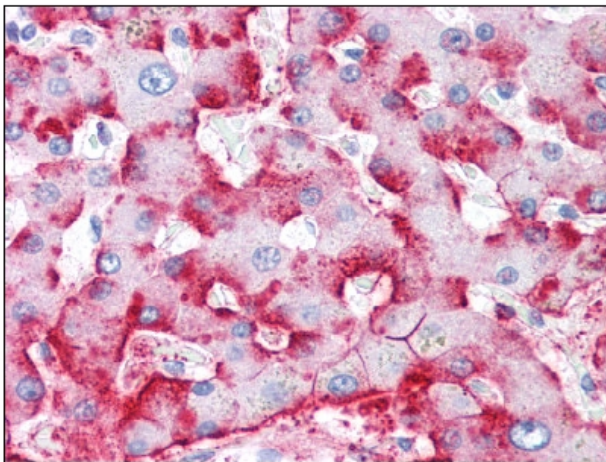
There are three variants of C4bp, composed of alpha and beta chains. The predominant form is a 570 kDa complex of 7 alpha chains and 1 beta chain. The other complexes formed are a 530 kDa homoheptamer of alpha chains or a 500 kDa complex of 6 alpha chains and 1 beta chain. C4bp regulates the activation of the classical complement pathway. It is a cofactor to the C3b/C4b inactivator, crucial to the proteolytic cleavage of C4b and important in cleavage of C3b. C4bp also regulates the C4bC2a complex (C3 convertase), accelerating its degradation by dissociating the complement fragment C2a. Both the C4bp alpha and beta chains interact with anticoagulant protein S and C4bp alpha binds protein S. C4bp is expressed in the blood serum.

Synonyms:

C4BPA, C4BP, Proline-rich protein, PRP

Protein Pathways:

Complement and coagulation cascades

Product images:


C4BPA antibody staining of Formalin-Fixed, Paraffin-Embedded Human Liver at 5 ug/ml followed by biotinylated anti-mouse IgG secondary antibody, Alkaline Phosphatase-Streptavidin and Chromogen.