

Product datasheet for **AM01321PU-N**

CD16 (FCGR3A) Mouse Monoclonal Antibody [Clone ID: DJ130c]

Product data:

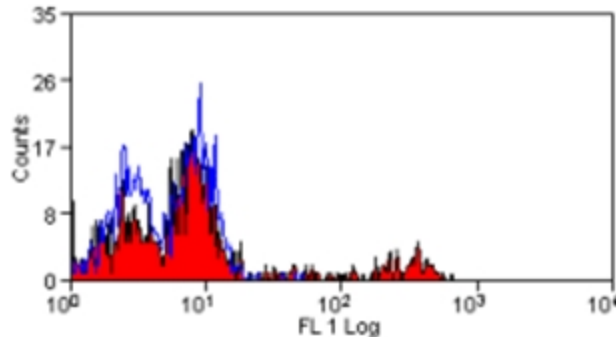
Product Type:	Primary Antibodies
Clone Name:	DJ130c
Applications:	FC, IHC
Recommended Dilution:	Flow Cytometry: Use 10 µl of 1/20-1/200 diluted antibody to label 1x10 ⁶ cells in 100 µl. Immunohistochemistry on Frozen Sections. Immunohistochemistry on Paraffin Sections: This product requires antigen retrieval using heat treatment prior to staining of paraffin sections. Sodium citrate buffer pH 6.0 is recommended for this purpose. Recommended Positive Control: Human tonsil.
Reactivity:	Human
Host:	Mouse
Isotype:	IgG1
Clonality:	Monoclonal
Immunogen:	CD34 antigen
Specificity:	This antibody recognizes Human CD16, a 50-65kD cell surface molecule. It recognizes all polymorphonuclear cells irrespective on their NA phenotype. Studies show that the <i>DJ130c</i> antibody recognizes an epitope in the first membrane-distal domain of CD16 and recognizes both CD16a and CD16b and has been demonstrated to cross-react with CD16 from Rhesus macaques, <i>Macaca mulatta</i> (<i>Xu et al.</i> 2012).
Formulation:	PBS State: Purified State: Liquid purified IgG fraction from Tissue Culture Supernatant Preservative: 0.09% Sodium Azide
Concentration:	lot specific
Purification:	Affinity Chromatography on Protein G
Conjugation:	Unconjugated
Storage:	Store undiluted at 2-8°C for one month or (in aliquots) at -20°C for longer. Avoid repeated freezing and thawing.
Stability:	Shelf life: one year from despatch.



[View online »](#)

Gene Name:	Fc fragment of IgG receptor IIIa
Database Link:	Entrez Gene 2214 Human P08637
Background:	CD16 which is the low affinity receptor for IgG (FcRIII), exists as a transmembranous form (Fc gammaRIIIA, or CD16a) and a glycosyl phosphatidylinositol (GPI) anchored form (Fc gammaRIIIB, or CD16b). CD16a is expressed by NK cells, some T cells, and macrophages, whereas CD16b is primarily expressed by granulocytes. In addition, CD16b exists as two allelic variants NA1 and NA2.
Synonyms:	FCGR3A, CD16A, FCG3, FCGR3, IGFR3, Fc-gamma RIII-alpha, Fc-gamma RIII, Fc-gamma RIIIa, FcRIII, FcRIIIa, FcR-10, IgG Fc receptor III-2
Protein Families:	ES Cell Differentiation/IPS, Secreted Protein, Transmembrane
Protein Pathways:	Fc gamma R-mediated phagocytosis, Natural killer cell mediated cytotoxicity, Systemic lupus erythematosus

Product images:



Staining of Human peripheral blood lymphocytes with Mouse anti Human CD16 antibody