

## Product datasheet for **AM01269PU-S**

### CD88 / C5R1 Rat Monoclonal Antibody [Clone ID: 10/92]

#### Product data:

Product Type:	Primary Antibodies
Clone Name:	10/92
Applications:	FC, IHC
Recommended Dilution:	<b>Flow Cytometry:</b> Use 10 µl of 1/50-1/100 diluted antibody to label 1x10 <sup>6</sup> cells in 100 µl. <b>Immunohistochemistry on Frozen Sections.</b> This clone is reported to work in <b>Immunohistochemistry on Paraffin Sections.</b>
Reactivity:	Mouse
Host:	Rat
Isotype:	IgG2a
Clonality:	Monoclonal
Immunogen:	RBL-2H3 transfected cells expressing murine C5aR. Cells from immunised Lou/c rats were fused with cells of the X63-Ag8.653 myeloma cell line.
Specificity:	This antibody Clone 10/92 recognizes Murine CD88. Clone 10/92 does not block the binding of the C5a to Murine CD88 (See Sourì et al. 2003).
Formulation:	PBS, pH 7.4 containing 0.09% Sodium Azide State: Purified State: Liquid purified IgG fraction
Concentration:	lot specific
Purification:	Affinity Chromatography on Protein G
Conjugation:	Unconjugated
Storage:	Store undiluted at 2-8°C for one month or (in aliquots) at -20°C for longer. Avoid repeated freezing and thawing.
Stability:	Shelf life: one year from despatch.
Gene Name:	complement component 5a receptor 1
Database Link:	<a href="#">Entrez Gene 12273 Mouse P30993</a>



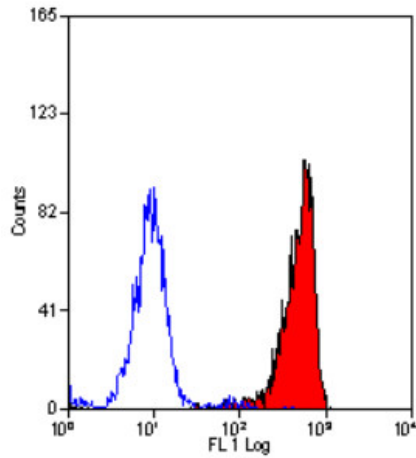
[View online »](#)

**Background:**

CD88 is a 45kD G-protein coupled cell surface receptor, which is otherwise known as C5aR. The CD88 molecule functions as a receptor for the complement component C5a, which is a potent proinflammatory molecule and a chemoattractant for neutrophils to sites of infection. In mouse, CD88 is expressed on granulocytes, monocytes and macrophages but not on resting or stimulated lymphocytes.

**Synonyms:**

C5a-R, C5aR, C5AR1, Complement Component 5a Receptor 1

**Product images:**

Staining of mouse peripheral blood granulocytes with Rat anti Mouse CD88 Cat.-No AM01269PU (Clone 10/92).