

## Product datasheet for **AM01167RP-N**

### **Ki67 (MKI67) Mouse Monoclonal Antibody [Clone ID: Ki-67]**

#### **Product data:**

Product Type:	Primary Antibodies
Clone Name:	Ki-67
Applications:	FC
Recommended Dilution:	Flow cytometry: The reagent is designed for analysis of human blood cells using 10 µl reagent / 100 µl of whole blood or 10 <sup>6</sup> cells in a suspension. The content of a vial (1 ml) is sufficient for 100 tests. Intracellular staining.
Reactivity:	Bovine, Human
Host:	Mouse
Isotype:	IgG1
Clonality:	Monoclonal
Immunogen:	Nuclei of the Hodgkin lymphoma cell line L428
Specificity:	This antibody recognizes Ki-67 antigen, a non-histone nuclear protein expressed exclusively in proliferating cells.
Formulation:	Phosphate buffered saline (PBS) Label: PE State: Liquid purified Ig fraction Preservative: 15 mM sodium azide Label: Conjugated with R-Phycoerythrin (PE) under optimum conditions. The conjugate is purified by size-exclusion chromatography and adjusted for direct use.
Conjugation:	PE
Storage:	Store the antibody undiluted at 2-8°C. <b>DO NOT FREEZE!</b> This product is photosensitive and should be protected from light.
Stability:	Shelf life: one year from despatch.
Gene Name:	marker of proliferation Ki-67
Database Link:	<a href="#">Entrez Gene 4288 Human P46013</a>



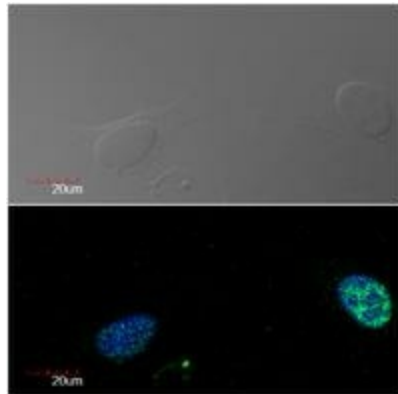
[View online »](#)

**Background:**

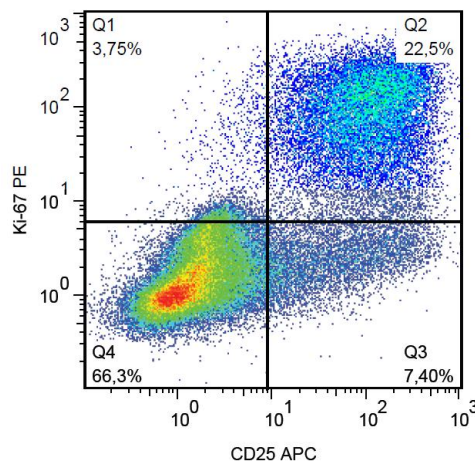
Ki-67 is a highly protease-sensitive nuclear protein expressed in two isoforms (345 kDa and 395 kDa), both of which are identified by the antibody clone Ki-67. The Ki-67 antigen is essential for cell proliferation and its expression is restricted to the cycling cells. It is detected in G1, S, G2 and M phase, whereas it is absent in cells which are in G0 phase and it is not associated with DNA repair processes. Ki-67 thus represents an important tool for detection of proliferating cells, which is of great importance in tumor diagnostics and is commonly used as a prognostic factor in cancer studies.

**Synonyms:**

Ki67 antigen, MKI67, Proliferation marker

**Product images:**


Immunocytochemistry detection of Ki-67 in U2OS cell line (human osteosarcoma) using monoclonal antibody Ki-67 (green). Cell nuclei stained with DAPI (blue).



Flow cytometry analysis of human peripheral blood mononuclear cells stimulated with PHA. Surface staining of CD25 (clone MEM-181 APC) was followed by permeabilization and nuclear staining of Ki-67 (clone Ki-67 PE).