

## Product datasheet for **AM01133PU-N**

### **PDPN Rat Monoclonal Antibody [Clone ID: NZ-1]**

#### **Product data:**

Product Type:	Primary Antibodies
Clone Name:	NZ-1
Applications:	FC, IHC, IP, WB
Recommended Dilution:	<b>FACS:</b> 1/200. <b>Western blot:</b> ≥ 1/200. <b>Immunoprecipitation:</b> 1/50. <b>Immunostaining/Immunohistochemistry on Frozen and Paraffin Sections:</b> 1/200.
Reactivity:	Human
Host:	Rat
Isotype:	IgG2a
Clonality:	Monoclonal
Specificity:	The monoclonal antibody will detect Human Podoplanin on the surface of lymphatic endothelial cells and kidney podocytes. Therefore, it will be a useful tool to study lymphatic vessel density in and around Human tumors.
Formulation:	PBS State: Purified State: Liquid purified antibody Preservative: 0.09% Sodium Azide
Concentration:	lot specific
Conjugation:	Unconjugated
Storage:	Store undiluted at 2-8°C for one month or (in aliquots) at -20°C for longer. Avoid repeated freezing and thawing.
Stability:	Shelf life: one year from despatch.
Gene Name:	podoplanin
Database Link:	<a href="#">Entrez Gene 10630 Human Q86YL7</a>



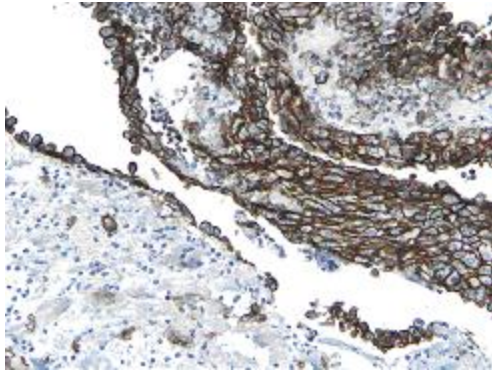
[View online »](#)

**Background:**

Podoplanin is a well-recognized lymphatic endothelium marker, which can be used to reliably distinguish lymphatic vessels from blood vessels. Podoplanin is a Mr 38,000 membrane mucoprotein that was originally detected on the surface of rat glomerular epithelial cells (podocytes) and was found to be linked to flattening of foot processes that occurs in glomerular diseases. Podoplanin shows features of a membrane mucoprotein with several conserved O-glycosylation sites. Currently, it is of unknown biological function. Because heavily O-glycosylated mucoproteins were identified recently as counterreceptors for selectins that mediate adhesion of inflammatory cells, it is possible that podoplanin plays a similar role in lymphatic endothelia.

**Synonyms:**

Glycoprotein 36, PA2.26 antigen, T1-alpha, Aggrus, PDPN, GP36, PSEC0003, PSEC0025

**Product images:**

NZ-1 Staining of Human Mesothelial Cells.