

Product datasheet for **AM01066FC-N**

CD2 Mouse Monoclonal Antibody [Clone ID: CC42]

Product data:

Product Type:	Primary Antibodies
Clone Name:	CC42
Applications:	FC
Recommended Dilution:	Flow Cytometry: Neat - 1/10; Use 10µl of the suggested working dilution to label 10e6 cells in 100 µl.
Reactivity:	Bovine, Goat
Host:	Mouse
Isotype:	IgG1
Clonality:	Monoclonal
Specificity:	This antibody recognises the bovine homologue of human CD2.
Formulation:	PBS, pH 7.4 containing 0.09% Sodium Azide and 1% Bovine Serum Albumin Label: FITC State: Liquid purified Ig Label: Fluorescein Isothiocyanate Isomer 1
Concentration:	lot specific
Purification:	Affinity chromatography on Protein G
Conjugation:	FITC
Storage:	Store the antibody undiluted at 2-8°C for one month or (in aliquots) at -20°C for longer. Avoid repeated freezing and thawing. This product is photosensitive and should be protected from light.
Stability:	Shelf life: one year from despatch.
Database Link:	Q5MB93



[View online »](#)

Background:

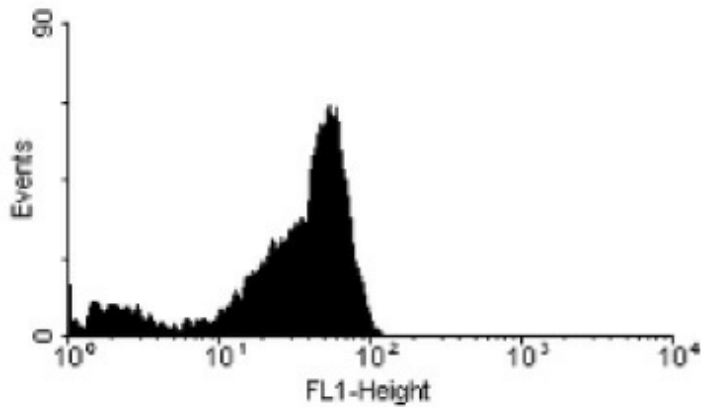
CD2 is a surface antigen of the human T lymphocyte lineage that is expressed on all peripheral blood T cells. It is one of the earliest T cell markers, being present on more than 95% of thymocytes; it is also found on some natural killer cells but not on B lymphocytes. CD2 interacts with lymphocyte function associated antigen (LFA3) and CD48/BCM1 to mediate adhesion between T cells and other cell types. CD2 is implicated in the triggering of T cells, the cytoplasmic domain is implicated in the signaling function. It is useful for the identification of lymphomas and leukaemias of T cell origin.

Synonyms:

SRBC, Erythrocyte receptor, LFA-2, LFA-3 receptor, Rosette receptor

Note:

The antibody inhibits rosetting with SRBC and stains cells in primary and secondary lymphoid organs in patterns consistent with those seen by human CD2 monoclonal antibodies.

Product images:

AM01066FC-N (MOUSE ANTI BOVINE CD2:FITC) staining of bovine peripheral blood lymphocytes.