

## Product datasheet for **AM01064RP-N**

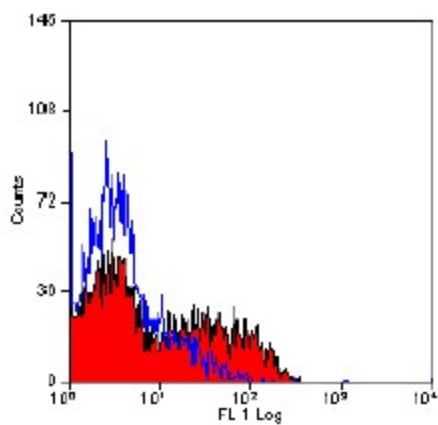
### CD1B Mouse Monoclonal Antibody [Clone ID: CC20]

#### Product data:

Product Type:	Primary Antibodies
Clone Name:	CC20
Applications:	FC
Recommended Dilution:	Flow Cytometry: Neat - 1/5; Use 10 µl of the suggested working dilution to label 10e6 cells in 100 µl.
Reactivity:	Bovine
Host:	Mouse
Isotype:	IgG2a
Clonality:	Monoclonal
Specificity:	This antibody recognises the bovine CD1w2 cell surface antigen, a glycoprotein heterodimer of 12kD and 46kD.
Formulation:	PBS, pH 7.4 containing 0.09% Sodium Azide and 1% Bovine Serum Albumin Label: PE State: Lyophilized purified Ig Label: R. Phycoerythrin (RPE)
Reconstitution Method:	Restore with 1 ml distilled water
Purification:	Affinity chromatography on Protein G
Conjugation:	PE
Storage:	Prior to and following reconstitution store at +4°C. DO NOT FREEZE. This product is photosensitive and should be protected from light. Should this product contain a precipitate we recommend microcentrifugation before use.
Stability:	Shelf life: one year from despatch.
Database Link:	<a href="#">Entrez Gene 509004 Bovine Q1L1H6</a>
Background:	CD1w2 is expressed by cortical thymocytes and a minority of medullary thymocytes, with a pattern similar to antibodies of the CD1b cluster in humans.
Synonyms:	CD1; CD1A; MGC125990; MGC125991; R1



[View online »](#)

**Product images:**

Staining of bovine peripheral blood lymphocytes  
with MOUSE ANTI BOVINE CD1w2:RPE