

Product datasheet for **AM01051RP-N**

CD16 Mouse Monoclonal Antibody [Clone ID: G7]

Product data:

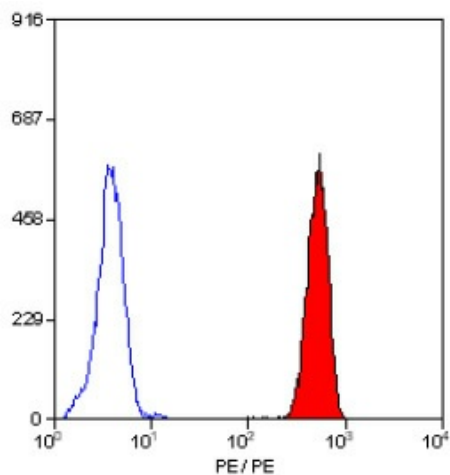
Product Type:	Primary Antibodies
Clone Name:	G7
Applications:	FC
Recommended Dilution:	Flow cytometry: Use 10 µl of neat antibody to label 10e6 cells in 100 µl.
Reactivity:	Porcine
Host:	Mouse
Isotype:	IgG1
Clonality:	Monoclonal
Immunogen:	Porcine peripheral blood leucocytes.
Specificity:	This antibody recognises the porcine homologue of human CD16 (Fc gamma RIII alpha).
Formulation:	PBS containing 0.09% Sodium azide, 1% BSA and 5% Sucrose Label: PE State: Lyophilized purified IgG fraction Label: R. Phycoerythrin (RPE)
Reconstitution Method:	Restore with 1.0 ml distilled water.
Purification:	Affinity chromatography on Protein G
Conjugation:	PE
Storage:	Prior to and following reconstitution store the antibody at 2-8°C. DO NOT FREEZE! This product is photosensitive and should be protected from light.
Stability:	Shelf life: one year from despatch.
Database Link:	Q28942
Background:	CD16 is a low affinity FC gamma receptor expressed by polymorphonuclear cells (PMN), peripheral blood lymphocytes (PBL) and monocytes in pigs.
Synonyms:	FCGR3A, CD16A, FCG3, FCGR3, IGFR3, Fc-gamma RIII-alpha, Fc-gamma RIII, Fc-gamma RIIIa, FcRIII, FcRIIIa, FcR-10, IgG Fc receptor III-2



[View online »](#)

Note: Clone G7 has been reported to block PBL mediated antibody-dependent cell cytotoxicity (ADCC) and partially inhibit PMN-mediated ADCC.

Product images:



Staining of porcine peripheral blood granulocytes with MOUSE ANTI PORCINE CD16:RPE