

## Product datasheet for **AM01047PU-S**

### CD13 (ANPEP) Mouse Monoclonal Antibody [Clone ID: CVS19]

#### Product data:

Product Type:	Primary Antibodies
Clone Name:	CVS19
Applications:	FC, IHC, IP
Recommended Dilution:	<b>Flow cytometry:</b> 1/25-1/200, use 10µl of this working dilution to label 106 cells in 100µl. <b>Immunohistochemistry on frozen sections.</b> <b>Immunoprecipitation.</b>
Reactivity:	Equine
Host:	Mouse
Isotype:	IgG1
Clonality:	Monoclonal
Immunogen:	Equine leucocytes.
Specificity:	This antibody recognises the equine CD13 cell surface antigen.
Formulation:	PBS containing 0.09% Sodium azide State: Purified State: Liquid purified IgG
Concentration:	lot specific
Purification:	Affinity chromatography on Protein G
Conjugation:	Unconjugated
Storage:	Store undiluted at 2-8°C for one month or (in aliquots) at -20°C for longer. In case of precipitate, we recommend microcentrifugation before use. Avoid repeated freezing and thawing.
Stability:	Shelf life: one year from despatch.
Gene Name:	alanyl aminopeptidase, membrane
Database Link:	<a href="#">P15144</a>



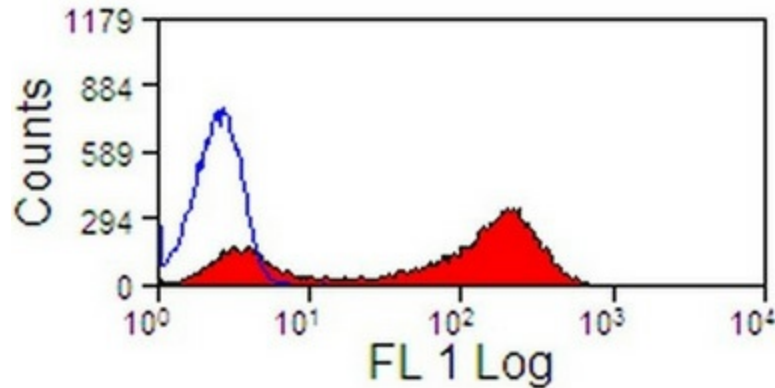
[View online »](#)

**Background:**

CD13 also known as Aminopeptidase N is a zinc dependent exopeptidase which cleaves amino acids from the N termini of target proteins including neuropeptides and cytokines. CD13 is expressed on all cells of the myeloid lineage as well as epithelial cells of the intestine, placenta, liver and kidney. CD13 is upregulated in a number of tumour types including lung, melanoma, thyroid and hepatocarcinoma and has been shown to correlate with poor prognosis. CD13 is a crucial molecule in tumour angiogenesis. CD13 is also the receptor for viruses from the coronavirus family.

**Synonyms:**

Aminopeptidase N, ANPEP, APN, PEPN

**Product images:**

Staining of equine peripheral blood granulocytes with mouse anti horse CD13 clone CVS19. followed by secondary FITC conjugated antibody.