

Product datasheet for **AM01047FC-N**

CD13 (ANPEP) Mouse Monoclonal Antibody [Clone ID: CVS19]

Product data:

Product Type:	Primary Antibodies
Clone Name:	CVS19
Applications:	FC
Recommended Dilution:	Flow cytometry: Neat - 1/10, use 10µl of the suggested working dilution to label 106 cells in 100µl.
Reactivity:	Equine
Host:	Mouse
Isotype:	IgG1
Clonality:	Monoclonal
Immunogen:	Equine leucocytes.
Specificity:	This antibody recognises the equine CD13 cell surface antigen.
Formulation:	PBS containing 0.09% Sodium azide and 1% BSA Label: FITC State: Purified State: Liquid purified IgG Label: Fluorescein Isothiocyanate Isomer 1
Concentration:	lot specific
Purification:	Affinity chromatography on Protein G
Conjugation:	FITC
Storage:	Store undiluted at 2-8°C for one month or (in aliquots) at -20°C for longer. This product is photosensitive and should be protected from light. Avoid repeated freezing and thawing. In case of precipitate, we recommend microcentrifugation before use.
Stability:	Shelf life: one year from despatch.
Gene Name:	alanyl aminopeptidase, membrane
Database Link:	P15144



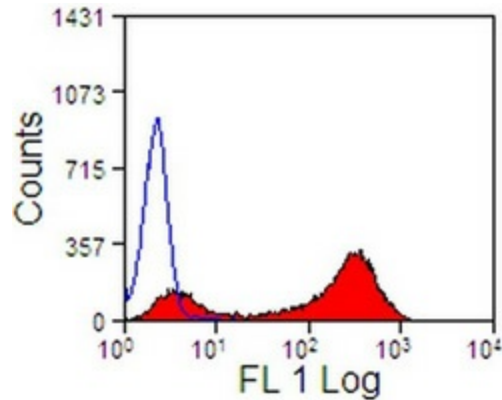
[View online »](#)

Background:

CD13 also known as Aminopeptidase N is a zinc dependent exopeptidase which cleaves amino acids from the N termini of target proteins including neuropeptides and cytokines. CD13 is expressed on all cells of the myeloid lineage as well as epithelial cells of the intestine, placenta, liver and kidney. CD13 is upregulated in a number of tumour types including lung, melanoma, thyroid and hepatocarcinoma and has been shown to correlate with poor prognosis. CD13 is a crucial molecule in tumour angiogenesis. CD13 is also the receptor for viruses from the coronavirus family.

Synonyms:

Aminopeptidase N, ANPEP, APN, PEPN

Product images:

Staining of equine peripheral blood granulocytes with CD13 antibody clone CVS19.