

Product datasheet for **AM00578SU-N**

NSE (ENO2) Mouse Monoclonal Antibody [Clone ID: E27]

Product data:

Product Type:	Primary Antibodies
Clone Name:	E27
Applications:	IHC, WB
Recommended Dilution:	Western Blot. Immunohistochemistry on Formalin-Fixed, Paraffin-Embedded Sections: 1/100-1/200 Pretreatment of deparaffinized tissue with heat-induced epitope retrieval is recommended. Use Polymer anti Mouse/Rabbit IgG as a detection system. <i>Positive Control:</i> Pancreas.
Reactivity:	Human
Host:	Mouse
Isotype:	IgG1
Clonality:	Monoclonal
Immunogen:	Purified Human Neuron-Specific Enolase (NSE).
Specificity:	Antibody to NSE reacts with gamma isozyme of Human enolase and does not react with alpha isozyme of human enolase. Cellular Localization: Cytoplasmic.
Formulation:	State: Supernatant State: Liquid Tissue Culture Supernatant with 0.2% BSA and 15mM Sodium Azide.
Conjugation:	Unconjugated
Storage:	Store the antibody undiluted at 2-8°C.
Stability:	Shelf life: one year from despatch.
Gene Name:	enolase 2
Database Link:	Entrez Gene 4747 Human Entrez Gene 2026 Human P09104



[View online »](#)

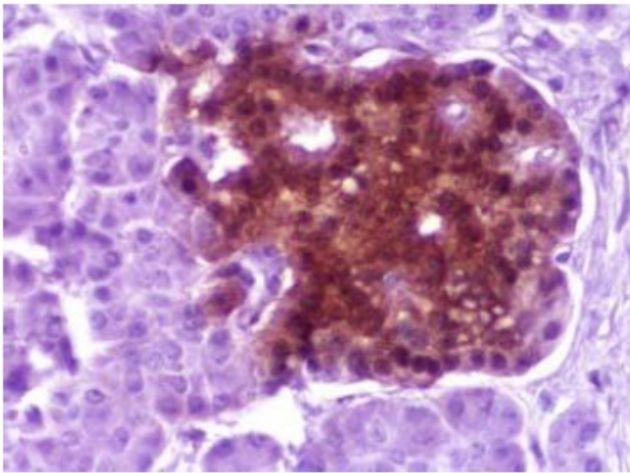
Background: Enolases are homo- or heterodimers of the three subunits: alpha (46kDa), beta (44kDa), and gamma (46kDa). The alpha-subunit is expressed in most tissues and the beta-subunit only in muscle. The gammasubunit is expressed primarily in neurons, in normal and in neoplastic neuroendocrine cells. Coexpression of NSE and chromogranin A is common in neuroendocrine neoplasms. Gamma-Gamma isozyme of enolase is found at elevated concentrations in small cell lung cancer and pediatric neuroblastoma.

Synonyms: NSE, ENO2, Enolase 2, Neural enolase, Gamma-enolase

Protein Families: Druggable Genome, ES Cell Differentiation/IPS

Protein Pathways: Amyotrophic lateral sclerosis (ALS)

Product images:



Formalin-Fixed, Paraffin-Embedded Human pancreas stained with NSE antibody Cat.-No. AM00578SU-N using peroxidase conjugate and DAB chromogen. Note cytoplasmic staining of islet cells.