

Product datasheet for **AM00403SU-L**

Wilms Tumor Protein (WT1) Mouse Monoclonal Antibody [Clone ID: 6F-H2]

Product data:

Product Type:	Primary Antibodies
Clone Name:	6F-H2
Applications:	IHC
Recommended Dilution:	Immunohistochemistry on Formalin-Fixed, Paraffin-Embedded Sections: 1/10-1/50 Pretreatment of tissue with proteolytic enzymes should be performed prior to staining. Use Polymer anti Mouse/Rabbit IgG as a detection system. <i>Positive Control:</i> Malignant mesothelioma, Wilms tumor.
Reactivity:	Human
Host:	Mouse
Isotype:	IgG1
Clonality:	Monoclonal
Immunogen:	Purified WT protein.
Specificity:	This antibody recognizes Wilm's Tumor Protein. Lung adenocarcinomas rarely stain positive with this antibody. Cellular Localization: Nuclear.
Formulation:	State: Supernatant State: Liquid Tissue Culture Supernatant with 0.2% BSA and 15mM Sodium Azide.
Conjugation:	Unconjugated
Storage:	Store the antibody undiluted at 2-8°C.
Stability:	Shelf life: one year from despatch.
Gene Name:	Wilms tumor 1
Database Link:	Entrez Gene 5395 Human Entrez Gene 7490 Human P19544
Background:	Wilm's Tumor (WT), a sporadic and familial childhood kidney tumor, is genetically heterogeneous. Wilm's tumor is associated with mutations of WT1, a zinc-finger transcription factor that is essential for the development of the metanephric kidney and the urogenital system. The WT1 gene is normally expressed in fetal kidney and mesothelium, and its expression has been suggested as a marker for Wilms tumor and mesothelioma.



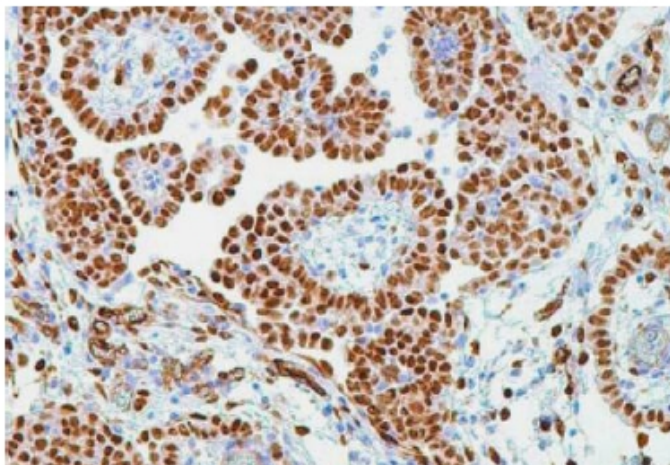
[View online »](#)

Synonyms: WT33

Protein Families: Druggable Genome

Protein Pathways: Mismatch repair

Product images:



Formalin-Fixed, Paraffin-Embedded Human Wilms tumor stained with WT1 antibody Cat.-No. AM00403SU-L using peroxidase conjugate and DAB chromogen. Note the nuclear staining of tumor cells.