

Product datasheet for **AM00355SU-N**

Villin (VIL1) Mouse Monoclonal Antibody [Clone ID: CWWB1]

Product data:

Product Type:	Primary Antibodies
Clone Name:	CWWB1
Applications:	IHC
Recommended Dilution:	Immunohistochemistry on Formalin-Fixed, Paraffin-Embedded Sections: 1/50-1/200 Pretreatment of deparaffinized tissue with heat-induced epitope retrieval is recommended. Use Polymer anti Mouse/Rabbit IgG as a detection system. <i>Positive Control:</i> Colon carcinoma, small intestine.
Reactivity:	Human
Host:	Mouse
Isotype:	IgG1
Clonality:	Monoclonal
Immunogen:	Human Villin protein.
Specificity:	This antibody recognizes Villin. Cellular Localization: Cytoplasmic.
Formulation:	State: Supernatant State: Liquid Tissue Culture Supernatant with 0.2% BSA and 15mM Sodium Azide.
Conjugation:	Unconjugated
Storage:	Store the antibody undiluted at 2-8°C.
Stability:	Shelf life: one year from despatch.
Gene Name:	villin 1
Database Link:	Entrez Gene 5395 Human Entrez Gene 7429 Human P09327



[View online »](#)

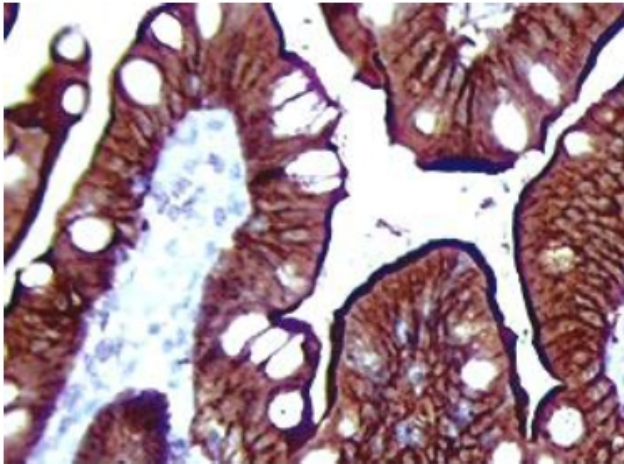
Background: Villin can cap, nucleate, sever and bundle actin in a Ca and phosphoinositide-regulated manner. It is associated with the microvillar actin core bundle of intestinal and renal brush border implicated in adsorption. Villin is composed of six repeats, each containing 150 residues that together constitute the core domain followed by the carboxyl-terminal headpiece domain of 87 residues. The core domain retains the Ca dependent capping nucleating and severing activity, whereas the headpiece domain contributes towards actin filament bundling and binding F-actin, independently of Ca.

Synonyms: VIL1

Protein Families: Druggable Genome

Protein Pathways: Mismatch repair

Product images:



Formalin-Fixed, Paraffin-Embedded Human small intestine stained with Villin antibody Cat.-No. AM00355SU-N using peroxidase conjugate and DAB chromogen. Note brush border and cytoplasmic staining of epithelial cells.