

Product datasheet for **AM00150PU-N**

STAT5A pTyr695/699 Mouse Monoclonal Antibody [Clone ID: 5G4]

Product data:

Product Type:	Primary Antibodies
Clone Name:	5G4
Applications:	ELISA, IF, IHC, WB
Recommended Dilution:	Western Blot: 0.5 µg/ml for HRPO/ECL detection. Recommended blocking buffer: Casein/Tween 20 based blocking and blot incubation buffer. ELISA: 0.05 µg/ml. Immunohistochemistry. Immunocytochemistry.
Reactivity:	Human
Host:	Mouse
Isotype:	IgG1
Clonality:	Monoclonal
Immunogen:	Synthetic phosphopeptide conjugated to KLH
Specificity:	This antibody specifically recognizes STAT5A phosphorylated at Tyr 694 and STAT5B phosphorylated at Tyr 699. The antibody does not crossreact with the non-phosphorylated form of STAT5 nor with unrelated tyrosine-phosphorylated proteins.
Formulation:	PBS/0.09% Na-Azide/PEG and Sucrose/50% Glycerol State: Purified State: Liquid purified IgG
Concentration:	lot specific
Purification:	Size exclusion chromatography
Conjugation:	Unconjugated
Storage:	Store the antibody (Aliquote and freeze in liquid nitrogen) at -20°C. Avoid repeated freezing and thawing. Thaw aliquots at 37°C. Thawed aliquots may be stored at 4°C up to 3 months.
Stability:	Shelf life: one year from despatch.
Gene Name:	signal transducer and activator of transcription 5A



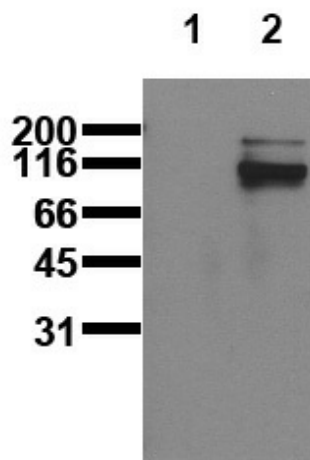
[View online »](#)

Database Link: [Entrez Gene 6776 Human P42229](#)

Background: The STAT proteins serve as both cytoplasmic signal transducers and nuclear activators of transcription. STATs are mediators involved in cytokine signalling. In response to a specific cytokine signal, STAT proteins are phosphorylated on conserved tyrosine residues. Phosphorylated STAT proteins dimerize via their SH2 domains and move to the nucleus. The STAT dimers bind to specific DNA elements resulting in transcriptional regulation of downstream target genes. STAT5 is activated in response to prolactine, growth hormone, GM-CSF, and IL-2.

Synonyms: STAT-5, STAT-5A, Mammary gland factor, MGF

Product images:



Activation of STAT5 A/B in MCF-7 cells Whole cell lysates of untreated (lane 1) and pervanadate-treated (lane 2) MCF-7 cells were applied to SDS-PAGE and transferred to a PVDF membrane. The immunoblot was probed with mab STAT5-5G4 at 0.5 ug/ml for 1h at 15-22°C and developed by ECL (exposure time: 5 sec).