

Product datasheet for **AM00145PU-N**

SRC pTyr416 Mouse Monoclonal Antibody [Clone ID: 9A6]

Product data:

Product Type:	Primary Antibodies
Clone Name:	9A6
Applications:	ELISA, FC, IF, WB
Recommended Dilution:	Western Blot: 0.5 µg/ml for HRPO/ECL detection. Recommended blocking buffer: Casein/Tween 20 based blocking and blot incubation buffer. ELISA: 0.05 µg/ml.
Reactivity:	Human, Mouse
Host:	Mouse
Isotype:	IgG3
Clonality:	Monoclonal
Immunogen:	Synthetic phosphopeptide conjugated to KLH Epitope: phosphotyrosine 416
Specificity:	AM00145PU-N specifically interacts with activated src phosphorylated at Tyr 416 and with src family kinases phosphorylated at the corresponding Tyr in the activation loop. The antibody does not crossreact with the non-phosphorylated form of src nor with unrelated phosphorylation sites.
Formulation:	2 x PBS / 0.09% Sodium Azide / PEG and Sucrose. State: Purified State: Lyophilized purified Ig fraction
Reconstitution Method:	Restore with 1.0 ml H ₂ O (15 min, RT).
Purification:	Subsequent Thiophilic Adsorption and Size Exclusion Chromatography.
Conjugation:	Unconjugated
Storage:	For long-term storage, freeze lyophilizate upon arrival (-20°C). Upon reconstitution, aliquote and freeze in liquid nitrogen; reconstituted antibody can be stored frozen at -80°C up to 1 year. Thaw aliquots at 37°C. Thawed aliquots may be stored at 4°C up to 3 months. Avoid repeated freezing and thawing.
Gene Name:	SRC proto-oncogene, non-receptor tyrosine kinase



[View online »](#)

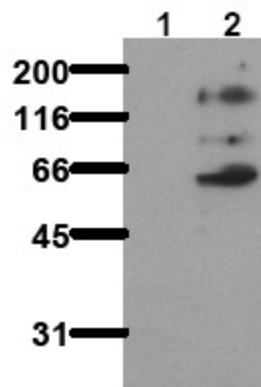
Database Link: [Entrez Gene 6714 Human P12931](#)

Background: Src is the best understood member of a family of 9 tyrosine kinases regulating cellular responses to extracellular stimuli. Src is activated by PDGF and other growth factors that activate transmembrane tyrosine kinase receptors as well as increased intracellular calcium or oxidative stress. Src becomes activated upon dephosphorylation of Tyr 527, leading to a conformational change of the src molecule towards an "open", active conformation which allows binding to other proteins via the SH2 and SH3 domain. Activated src phosphorylates a variety of substrates involved in the mitogenic signalling pathway, cytoskeletal organization, cell-substrate adhesion, cell-cell adhesion, cell-cell communication, and RNA processing.

Synonyms: c-Src, pp60c-src

Note: **Molecular weight of antigen:** 60 kDa

Product images:



Phosphospecificity: Whole cell extracts of control (co) and pervanadate stimulated HEK-293 tumor cells were applied to SDS-PAGE (ca 20.000 cells per lane) and transferred to PVDF membranes. Immunoblots were probed with mab src 9A6 (0.5 ug/ ml) for 1h at RT and developed by ECL (exp. time: 30 sec). lane 1: co; Lane 2: pervanadate