

## Product datasheet for **AM00139PU-N**

### Scramblase 1 (PLSCR1) (N-term) (incl. pos. control) Mouse Monoclonal Antibody [Clone ID: 1E9]

#### Product data:

Product Type:	Primary Antibodies
Clone Name:	1E9
Applications:	WB
Recommended Dilution:	Western Blot: 1 µg/ml for HRPO/ECL detection. <b>Recommended blocking buffer:</b> Casein/Tween 20 based blocking and blot incubation buffer.
Reactivity:	Human
Host:	Mouse
Isotype:	IgG1
Clonality:	Monoclonal
Immunogen:	Synthetic peptide conjugated to KLH.
Specificity:	This antibody specifically recognizes the N-terminus of scramblase-1 at 35 kDa.
Formulation:	1 ml PBS containing 0.09% Sodium Azide as preservative, PEG and Sucrose. State: Purified State: Lyophilized purified IgG fraction.
Reconstitution Method:	Restore with 1 ml H <sub>2</sub> O (15 min, RT).
Purification:	Subsequent Thiophilic Adsorption and Size Exclusion Chromatography.
Conjugation:	Unconjugated
Storage:	Store lyophilized (preferably in a desiccator) at -20°C and reconstituted (aliquote and freeze in liquid nitrogen) at -80°C. Thaw aliquots at 37°C. Thawed aliquots may be stored at 4°C up to 3 months. Avoid repeated freezing and thawing.
Stability:	Shelf life: one year from despatch.
Gene Name:	phospholipid scramblase 1
Database Link:	<a href="#">Entrez Gene 5359 Human O15162</a>



[View online »](#)

**Background:** Scramblase-1 is a calcium-binding protein that can be induced by interferon and growth factors (e.g. epidermal growth factor EGF). Depending on its palmitoylation state, scramblase-1 either inserts into the plasma membrane or binds DNA in the nucleus. Scramblase-1 is a substrate for src kinases.

**Synonyms:** Phospholipid scramblase 1, PL scramblase 1, MmTRA1b

**Note:** Protocol: **Positive Control Cell Lysate**  
HepG2 untreated

**Size Sufficient:** 20 mini-gel lanes.

**Formulation:** Lyophilized cell lysate from serum starved HepG2 cells.

**Reconstitution:** Restore by addition of 200 µl H<sub>2</sub>O. After complete solubilization add 200 µl 2x SDS-PAGE sample buffer, mix and incubate at 90°C for 5 min.

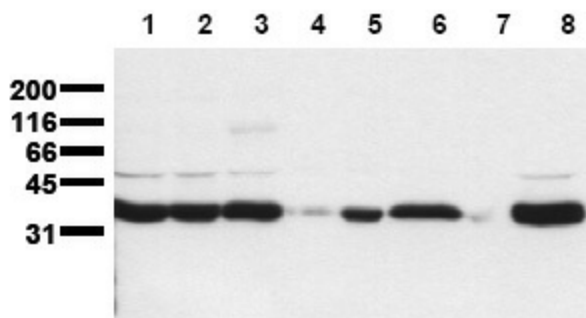
**Storage:** Aliquote and store frozen.  
Avoid repeated freeze/thaw cycles.

**Application:** The positive control cell lysate is recommended for Immunoblot applications. 20 µl of positive control cell lysate correspond to ca. 80.000 cells.  
Use 20 µl / lane (mini gel) for HRPO/ECL detection of the target proteins.

**Please Note:** The lyophilized cell lysates contain SDS and are not recommended for applications with native proteins such as immunoprecipitation.

**Protein Families:** Druggable Genome, Stem cell - Pluripotency

**Product images:**



Detection of Endogenous Scramblase 1. Whole cell lysates of serum starved tumor cells were applied to SDS-PAGE and transferred to a PVDF membrane. The immunoblot was probed with mab Scram1-1E9 (0.5 µg/ml) for 1h at RT and developed by ECL (exp. time: 30 sec). Lane 1: HeLa Lane 2: HepG2 Lane 3: HEK-293 Lane 4: SY5Y Lane 5: Jurkat Lane 6: U937 Lane 7: K562 Lane 8: THP