

## Product datasheet for **AM00138PU-N**

### **SAPK4 (MAPK13) (N-term) (incl. pos. control) Mouse Monoclonal Antibody [Clone ID: 5H7]**

#### **Product data:**

<b>Product Type:</b>	Primary Antibodies
<b>Clone Name:</b>	5H7
<b>Applications:</b>	ELISA, IHC, WB
<b>Recommended Dilution:</b>	Western Blot: 0.5 µg/ml for HRPO/ECL detection. Recommended blocking buffer: Casein/Tween 20 based blocking and blot incubation buffer. ELISA: 0.05 µg/ml. Immunohistochemistry.
<b>Reactivity:</b>	Human
<b>Host:</b>	Mouse
<b>Isotype:</b>	IgG1
<b>Clonality:</b>	Monoclonal
<b>Immunogen:</b>	N-terminal peptide conjugated to KLH
<b>Specificity:</b>	This antibody specifically interacts with the N-terminus of SAPK2δ.
<b>Formulation:</b>	1 ml PBS / 0.1 % Na-azide / PEG and Sucrose State: Purified State: Lyophilized purified IgG
<b>Reconstitution Method:</b>	Restore with 1 ml H <sub>2</sub> O (15 min, RT).
<b>Purification:</b>	Size exclusion chromatography
<b>Conjugation:</b>	Unconjugated
<b>Storage:</b>	Store lyophilized (preferably in a desiccator) at -20°C and reconstituted (aliquote and freeze in liquid nitrogen) at -80°C. Avoid repeated freezing and thawing. Thaw aliquots at 37°C. Thawed aliquots may be stored at 4°C up to 3 months.
<b>Stability:</b>	Shelf life: one year from despatch.
<b>Gene Name:</b>	mitogen-activated protein kinase 13
<b>Database Link:</b>	<a href="#">Entrez Gene 5603 Human</a> <a href="#">O15264</a>



[View online »](#)

**Background:**

Stress-activated Protein Kinases (SAPKs) are strongly activated in response to adverse stimuli such as heat and osmotic shock, UV light and other DNA-damaging reagents, and inhibitors of protein synthesis. They are also activated strongly in response to agonists that are released or produced under conditions of stress, such as proinflammatory cytokines. Stress-activated Protein Kinase 2 (SAPK2/p38) phosphorylates conserved Ser - Pro or Thr - Pro peptide motifs.

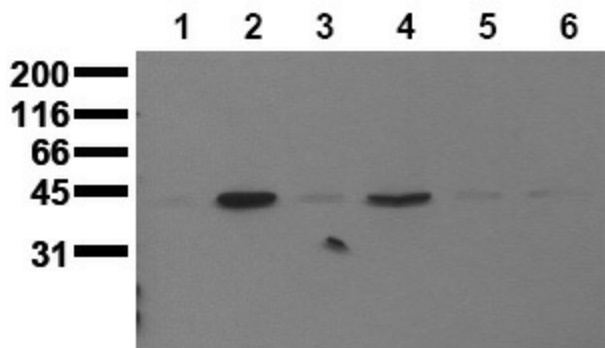
**Synonyms:**

Mitogen-activated protein kinase 13, Stress-activated protein kinase 4, p38 delta, PRKM13, SAPK4

**Note:**

Molecular Weight: 42kDa.  
Epitope: N-terminus, interacts with SAPK2 (p38/CSBP).

**Product images:**



Detection of endogenous SAPK2 delta Whole cell lysates of serum starved tumor cells (20,000 cells per lane) were applied to SDS-PAGE and transferred to a PVDF membrane. The immunoblot was probed with mab SAPK2d-5H7 (0.5 ug/ ml) for 1h at RT and developed by ECL (exp. time: 30 sec). lane 1: MDA-MB 231; lane 2: MDA-MB 468; lane 3: MCF-7; lane 4: T47D; lane 5: SW480; lane 6: SW620