

Product datasheet for **AM00136PU-N**

p38 (MAPK14) (N-term) (incl. pos. control) Mouse Monoclonal Antibody [Clone ID: 13D5]

Product data:

Product Type:	Primary Antibodies
Clone Name:	13D5
Applications:	ELISA, IF, IP, WB
Recommended Dilution:	Western Blot: 1 µg/ml for HRPO/ECL detection. Recommended blocking buffer: Casein/Tween 20 based blocking and blot incubation buffer. ELISA: 0.05 µg/ml. Immunoprecipitation: 1 - 10 µg per 10 ⁶ pervanadate-treated A431 cells. Immunocytochemistry.
Reactivity:	Canine, Human, Mouse, Rat
Host:	Mouse
Isotype:	IgG1
Clonality:	Monoclonal
Immunogen:	Synthetic peptide conjugated to KLH
Specificity:	This antibody specifically interacts with the N-terminus of SAPK2 / p38 / CSBP.
Formulation:	1 ml PBS / 0.1 % Na-azide / PEG and Sucrose State: Purified State: Lyophilized purified IgG
Reconstitution Method:	Restore with 1 ml H ₂ O (15 min, RT).
Purification:	Size exclusion chromatography
Conjugation:	Unconjugated
Storage:	Store lyophilized (preferably in a desiccator) at -20°C and reconstituted (aliquote and freeze in liquid nitrogen) at -80°C. Avoid repeated freezing and thawing. Thaw aliquots at 37°C. Thawed aliquots may be stored at 4°C up to 3 months.
Stability:	Shelf life: one year from despatch.
Gene Name:	mitogen-activated protein kinase 14
Database Link:	Entrez Gene 1432 Human Q16539



[View online »](#)

Background:

Stress-activated Protein Kinases (SAPKs) are strongly activated in response to adverse stimuli such as heat and osmotic shock, UV light and other DNA-damaging reagents, and inhibitors of protein synthesis. They are also activated strongly in response to agonists that are released or produced under conditions of stress, such as proinflammatory cytokines. Stress-activated Protein Kinase 2 (SAPK2/p38) phosphorylates conserved Ser - Pro or Thr - Pro peptide motifs.

Synonyms:

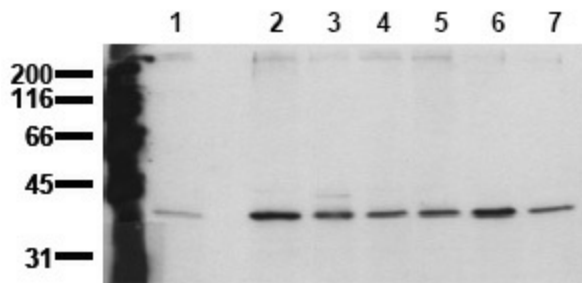
Mitogen-activated protein kinase 14, p38 alpha, MXI2, SAPK2A, CSBP, CSBP1, CSBP2, CSPB1

Note:

Molecular Weight: 38kDa.

Epitope: N-terminus, interacts with SAPK2 (p38/CSBP).

Product images:



Detection of endogenous SAPK2alpha Whole cell lysates of serum starved tumor cells (20,000 cells per lane) were applied to SDS-PAGE and transferred to a PVDF membrane. The immunoblot was probed with mab SAPK2a-13D5 (0.5 ug/ ml) for 1h at RT and developed by ECL (exp. time: 30 sec). lane 1: A431; lane 2:SW480; lane 3: SW620; lane 4: HT29; lane 5: MCF7; lane 6: MDA-MB231; lane 7: T47D