

Product datasheet for **AM00132PU-N**

RAF1 Mouse Monoclonal Antibody [Clone ID: PBB-1]

Product data:

Product Type:	Primary Antibodies
Clone Name:	PBB-1
Applications:	WB
Recommended Dilution:	Western Blot: 0.5 µg/ml for HRPO/ECL detection. Recommended blocking buffer: Casein/Tween 20 based blocking and blot incubation buffer.
Reactivity:	Human
Host:	Mouse
Isotype:	IgG1
Clonality:	Monoclonal
Immunogen:	c-Raf kinase domain.
Specificity:	This antibody specifically recognizes c-raf in Western blot applications.
Formulation:	PBS/0.09% Sodium Azide/PEG and Sucrose/50% Glycerol State: Purified State: Liquid purified IgG fraction.
Concentration:	lot specific
Purification:	Subsequent Thiophilic Adsorption and Size Exclusion Chromatography
Conjugation:	Unconjugated
Storage:	Store the antibody (in aliquots) at -20°C. Avoid repeated freezing and thawing.
Stability:	Shelf life: one year from despatch.
Gene Name:	Raf-1 proto-oncogene, serine/threonine kinase
Database Link:	Entrez Gene 5894 Human P04049
Background:	The c-raf protein is an important kinase in the transmission of extracellular stimuli to the nucleus. Mitogenic stimulation of cells induces hyperphosphorylation of c-raf in multiple serine, threonine and tyrosine residues. Phosphorylation of serines 43, 259 and 621 has been implicated in the negative regulation of raf. Phosphorylation of serine 43 interferes with ras binding, serine 259 and serine 621 represent binding sites for the 14-3-3 proteins.



[View online »](#)

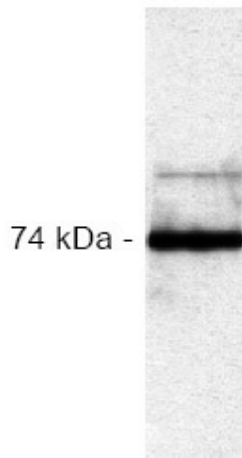
Synonyms: C-RAF, Raf-1, cRaf

Note: **Mol. Weight:** 74 kDa

Protein Families: Druggable Genome, Protein Kinase

Protein Pathways: Acute myeloid leukemia, B cell receptor signaling pathway, Bladder cancer, Chemokine signaling pathway, Chronic myeloid leukemia, Colorectal cancer, Endometrial cancer, ErbB signaling pathway, Fc epsilon RI signaling pathway, Fc gamma R-mediated phagocytosis, Focal adhesion, Gap junction, Glioma, GnRH signaling pathway, Insulin signaling pathway, Long-term depression, Long-term potentiation, MAPK signaling pathway, Melanogenesis, Melanoma, Natural killer cell mediated cytotoxicity, Neurotrophin signaling pathway, Non-small cell lung cancer, Pancreatic cancer, Pathways in cancer, Progesterone-mediated oocyte maturation, Prostate cancer, Regulation of actin cytoskeleton, Renal cell carcinoma, T cell receptor signaling pathway, Vascular smooth muscle contraction, VEGF signaling pathway

Product images:



Immunoblot Analysis A431 cell lysate probed with mab C-Raf (PBB-1) at 0.1 ug/ml.