

Product datasheet for **AM00107PU-N**

AKT1 non pSer473 (incl. pos. control) Mouse Monoclonal Antibody [Clone ID: 11A11]

Product data:

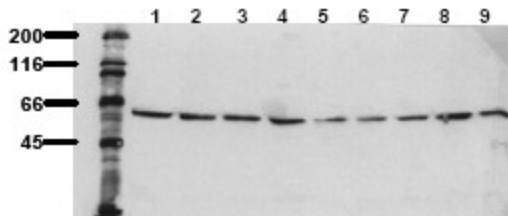
Product Type:	Primary Antibodies
Clone Name:	11A11
Applications:	ELISA, WB
Recommended Dilution:	Suitable for Western blot: 0.5 µg/ml for HRPO/ECL detection. Recommended buffer: Casein/Tween 20 based blocking and blot incubation buffer. Use cell lysate from untreated HepG2 cells (provided with this antibody). ELISA: 0.05 µg/ml.
Reactivity:	Canine, Human, Mouse, Rat
Host:	Mouse
Isotype:	IgG1
Clonality:	Monoclonal
Immunogen:	Synthetic peptide conjugated to KLH. Epitope: C-terminus.
Specificity:	11A11 specifically recognizes PKB when it is dephosphorylated at serine 473.
Formulation:	State: Purified State: Lyophilized from 1 ml 2 x PBS / 0.09 % Na-azide / PEG and Sucrose.
Reconstitution Method:	Restore with 1 ml H ₂ O (15 min, RT).
Purification:	Subsequent thiophilic adsorption and size exclusion chromatography
Conjugation:	Unconjugated
Storage:	For long-term storage, freeze lyophilizate upon arrival (-20°C). Upon reconstitution, aliquote and freeze in liquid nitrogen; reconstituted antibody can be stored frozen at -80°C up to 1 year. Thaw aliquots at 37°C. Thawed aliquots may be stored at 4°C up to 3 months. Avoid repeated freeze / thaw cycles.
Gene Name:	AKT serine/threonine kinase 1
Database Link:	Entrez Gene 207 Human P31749



[View online »](#)

- Background:** The PKB (RAC/akt) protein kinases are a family of second messenger-regulated serine/threonine kinases. Three mammalian isoforms (alpha, beta, gamma) have been identified so far; the alpha-isoform being the cellular homologue of the v-akt oncogene. Stimulation of cells with growth factors leads to activation of PKB by a phosphoinositide-3-kinase dependent signal transduction pathway.
- Synonyms:** Akt-1, RAC-PK-alpha, Protein kinase B, C-AKT
- Note:** A positive control cell lysate is provided - please see "Protocols" for details.
- Protocol: POSITIVE CONTROL CELL LYSATE: HepG2 untreated
Format:
Lyophilized cell lysate from serum starved HepG2 cells
Reconstitution:
Restore by addition of 200 µl H₂O. After complete solubilization add 200 µl 2x SDS-PAGE sample buffer, mix and incubate at 90°C for 5 min.
Aliquote and store frozen, avoid repeated freezing and thawing.
Application:
The positive control cell lysate is recommended for immunoblot applications. 20 µl of positive control cell lysate correspond to ca. 80.000 cells.
Use 20 µl / lane (mini gel) for HRPO/ECL detection of the target proteins.
PLEASE NOTE:
The lyophilized cell lysates contain SDS and are NOT recommended for applications with native proteins such as immunoprecipitation.

Product images:



Detection of endogenous PKB: Whole cell lysates of serum starved tumor cells (20.000 cells per lane) were applied to SDS-PAGE and transferred to a PVDF membrane. The immunoblot was probed with mab 11A11 (1 ug/ ml) for 1h at RT and developed by ECL (exp. time: 30 sec). lane 1: HeLa; lane 2: HepG2; lane 3: HEK293; lane 4: SH-SY5Y; lane 5: MDCK; lane 6: PC12; lane 7: CMT; lane 8: Neuro 2A; lane 9: 3T3