

## Product datasheet for **AM00098PU-N**

### eNOS (NOS3) pSer1177 Mouse Monoclonal Antibody [Clone ID: 15E2]

#### Product data:

Product Type:	Primary Antibodies
Clone Name:	15E2
Applications:	ELISA, WB
Recommended Dilution:	<b>ELISA:</b> Use at 0.1 µg/ml. <b>Western Blot:</b> 0.5 µg/ml for HRPO/ECL detection. <b>Recommended blocking buffer:</b> Casein/Tween 20 based blocking and blot incubation buffer. <i>Provided Positive Control:</i> Cell lysate from pervanadate treated Bend3 cells (See Protocol).
Reactivity:	Human
Host:	Mouse
Isotype:	IgG1
Clonality:	Monoclonal
Immunogen:	Synthetic phosphopeptide conjugated to KLH. <b>Epitope:</b> Phosphoserine 1177
Specificity:	This antibody specifically recognizes eNOS phosphorylated at Serine 1177.
Formulation:	PBS State: Purified State: Liquid purified IgG fraction Stabilizer: 50% Glycerol, PEG and Sucrose Preservative: 0.09% Sodium Azide
Concentration:	lot specific
Purification:	Subsequent Ultrafiltration and Size Exclusion Chromatography
Conjugation:	Unconjugated
Storage:	Store undiluted at 2-8°C for one month or (in aliquots) at -20°C for longer. Avoid repeated freezing and thawing.
Stability:	Shelf life: one year from despatch.
Gene Name:	nitric oxide synthase 3
Database Link:	<a href="#">Entrez Gene 4846 Human P29474</a>



[View online »](#)

**Background:** Endothelial NO synthase (eNOS) produces nitric oxid (NO) which plays a crucial role in cardiovascular homeostasis. Activation of the enzyme and NO production can be induced by phosphorylation of eNOS at serine 1177 by activated Akt/PKB.

**Synonyms:** Endothelial NOS, EC-NOS, NOS type III, Constitutive NOS, eNOS

**Note:** Protocol: **Positive Control: Bend 3 pervanadate treated**

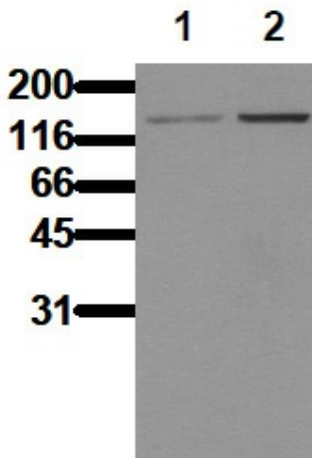
**Format:** Lyophilized cell lysate from Bend 3 cells. Serum starved cells were treated for 15 min. with pervanadate

**Reconstitution:** Restore by addition of 200  $\mu$ l H<sub>2</sub>O. After complete solubilization add 200  $\mu$ l 2x SDS-PAGE sample buffer, mix and incubate at 90°C for 5 min.

**Application:** The positive control cell lysate is recommended for immunoblot applications. 20  $\mu$ l of positive control cell lysate correspond to ca. 20,000 cells. Use 20  $\mu$ l/lane (mini gel) for HRPO/ECL detection of the target proteins.  
*Please NOTE:* The lyophilized cell lysates contain SDS and are not recommended for applications with native proteins such as in immunoprecipitation.

**Storage:** Aliquote reconstituted product and store frozen. Avoid repeated freezing and thawing

### Product images:



Immunoblot Analysis: Whole cell lysates of untreated (Lane 1) and pervanadate-treated (Lane 2) bend 3 cells were separated by SDS-PAGE and blotted to a PVDF membrane. The immunoblot was probed with mab eNOS Antibody (Clone 15E2) at 1  $\mu$ g/ml for 1h at 15-22°C and developed by ECL (exposure time: 3min). Mab eNOS-15E2 recognizes eNOS pSer1177 at 140 kDa.