

## Product datasheet for **AM00097PU-N**

### **p38 (MAPK14) (N-term) (incl. pos. control) Mouse Monoclonal Antibody [Clone ID: 2F2]**

#### **Product data:**

Product Type:	Primary Antibodies
Clone Name:	2F2
Applications:	ELISA, IP, WB
Recommended Dilution:	<u>Western Blot</u> : 0.5 µg/ml for HRPO/ECL detection. Recommended blocking buffer: Casein/Tween 20 based blocking and blot incubation buffer. Positive Control: Cell lysate from untreated A431 cells. <u>ELISA</u> : 0.05 µg/m. <u>Immunoprecipitation</u> : 1 - 10 µg per 10e6 pervanadate-treated A431 cells.
Reactivity:	Canine, Human, Mouse, Rat
Host:	Mouse
Isotype:	IgG1
Clonality:	Monoclonal
Immunogen:	Synthetic peptide conjugated to KLH
Specificity:	This antibody is directed against the N-terminus of Mxi2.
Formulation:	1 ml 2 x PBS / 0.09 % Na-azide / PEG and Sucrose State: Purified State: Lyophilized purified IgG
Reconstitution Method:	Restore with 1 ml H <sub>2</sub> O (15 min, RT).
Purification:	Size exclusion chromatography
Conjugation:	Unconjugated
Storage:	Store lyophilized (preferably in a desiccator) at -20°C and reconstituted (aliquote and freeze in liquid nitrogen) at -80°C. Avoid repeated freezing and thawing. Thaw aliquots at 37°C. Thawed aliquots may be stored at 4°C up to 3 months.
Stability:	Shelf life: one year from despatch.
Gene Name:	mitogen-activated protein kinase 14
Database Link:	<u><a href="#">Entrez Gene 1432 Human Q16539</a></u>



[View online »](#)

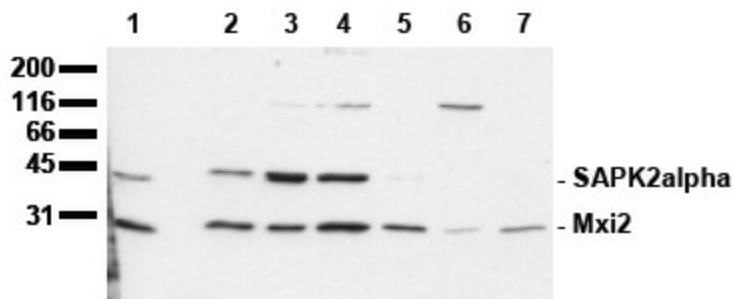
**Background:**

Mxi2 is a splice variant of SAPK2α (p38). Stress-activated protein kinases (SAPK) are strongly activated in response to adverse stimuli such as heat and osmotic shock, UV light and other DNA-damaging reagents, and inhibitors of protein synthesis. They are also activated strongly in response to agonists that are released or produced under conditions of stress, such as proinflammatory cytokines.

**Synonyms:**

Mitogen-activated protein kinase 14, p38 alpha, MXI2, SAPK2A, CSBP, CSBP1, CSBP2, CSPB1

**Product images:**



Detection of endogenous Mxi / SAPK2alpha  
 Whole cell lysates of serum starved tumor cells (20,000 cells per lane) were applied to SDS-PAGE and transferred to a PVDF membrane. The immunoblot was probed with mab Mxi-2F2 (0.5 ug/ ml) for 1h at RT and developed by ECL (exp. time: 30 sec). Mab Mxi-2F2 recognizes SAPK2a/p38 at 38 kDa and its splice variant Mxi2 at 30 kDa. lane 1: A431; lane 2:SW480; lane 3: SW620; lane 4: HT29; lane 5: MCF7; lane 6: MDA231; lane 7: T47D