

Product datasheet for **AM00095PU-N**

MEK5 (MAP2K5) (incl. pos. control) Mouse Monoclonal Antibody [Clone ID: 14B5]

Product data:

Product Type:	Primary Antibodies
Clone Name:	14B5
Applications:	WB
Recommended Dilution:	Western Blot: 0.5 µg/ml for HRPO/ECL detection. Recommended blocking buffer: Casein/Tween 20 based blocking and blot incubation buffer. Positive Control: Cell lysate from untreated A431 cells.
Reactivity:	Canine, Human, Mouse, Rat
Host:	Mouse
Isotype:	IgG1
Clonality:	Monoclonal
Immunogen:	Synthetic peptide conjugated to hemocyanin
Specificity:	This antibody reacts to MKK5.
Formulation:	1 ml PBS / 0.09 % Na-azide / PEG and Sucrose State: Purified State: Lyophilized purified IgG
Reconstitution Method:	Restore with 1 ml H ₂ O (15 min, RT).
Purification:	Size exclusion chromatography
Conjugation:	Unconjugated
Storage:	Store lyophilized (preferably in a desiccator) at -20°C and reconstituted (aliquote and freeze in liquid nitrogen) at -80°C. Avoid repeated freezing and thawing. Thaw aliquots at 37°C. Thawed aliquots may be stored at 4°C up to 3 months.
Stability:	Shelf life: one year from despatch.
Gene Name:	mitogen-activated protein kinase kinase 5
Database Link:	Entrez Gene 5607 Human Q13163



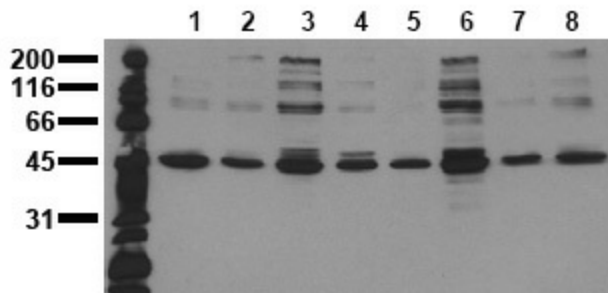
[View online »](#)

Background:

Mitogen-activated protein kinase kinase 5 (MKK5) belongs to the serine/threonine protein kinase family and the MAPK subfamily (MAP2K, MKK or MEKs). MKK5 specifically phosphorylates erk5/MAPK7 within the kinase activation loop pThr-E-pTyr motif. After activation erk5 phosphorylates MKK5 on multiple phosphoserine residues. The MKK5/erk5 pathway may play an important role in prostate and breast cancer.

Synonyms:

MAP kinase kinase 5, MAPKK 5, MEK5, MKK5

Product images:

Detection of endogenous MKK5 Whole cell lysates of serum starved tumor cells (20.000 cells per lane) were applied to SDS-PAGE and transferred to a PVDF membrane. The immunoblot was probed with mab MKK5-14B5 (0.5 ug/ ml) for 1h at RT and developed by ECL (exp. time: 30 sec). lane 1: A431; lane 2: A549; lane 3: SKOV3; lane 4: OVCAR5; lane 5: HaCaT; lane 6: PC3; lane 7: HeLa; lane 8: HepG2