

## Product datasheet for **AM00092PU-N**

### **MEK2 (MAP2K2) (incl. pos. control) Mouse Monoclonal Antibody [Clone ID: 8E8]**

#### **Product data:**

<b>Product Type:</b>	Primary Antibodies
<b>Clone Name:</b>	8E8
<b>Applications:</b>	ELISA, WB
<b>Recommended Dilution:</b>	Western Blot: 0.5 µg/ml for HRPO/ECL detection. Recommended blocking buffer: Casein/Tween 20 based blocking and blot incubation buffer. Positive Control: Cell lysate from untreated HepG2 cells. ELISA: 0.1 µg/ml (protein ELISA).
<b>Reactivity:</b>	Canine, Human, Mouse, Rat
<b>Host:</b>	Mouse
<b>Isotype:</b>	IgG1
<b>Clonality:</b>	Monoclonal
<b>Immunogen:</b>	Synthetic peptide conjugated to KLH
<b>Specificity:</b>	This antibody specifically recognizes the N-terminus of MEK2 at 45 kDa.
<b>Formulation:</b>	1 ml PBS / 0.09 % Na-azide / PEG and Sucrose State: Purified State: Lyophilized purified IgG
<b>Reconstitution Method:</b>	Restore with 1 ml H <sub>2</sub> O (15 min, RT)
<b>Purification:</b>	Size exclusion chromatography
<b>Conjugation:</b>	Unconjugated
<b>Storage:</b>	Store lyophilized (preferably in a desiccator) at -20°C and reconstituted (aliquote and freeze in liquid nitrogen) at -80°C. Avoid repeated freezing and thawing. Thaw aliquots at 37°C. Thawed aliquots may be stored at 4°C up to 3 months.
<b>Stability:</b>	Shelf life: one year from despatch.
<b>Gene Name:</b>	mitogen-activated protein kinase kinase 2
<b>Database Link:</b>	<a href="#">Entrez Gene 5605 Human P36507</a>

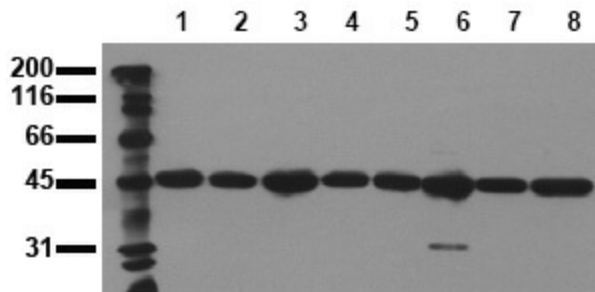


[View online »](#)

**Background:** MEK (MAP Kinase Kinase) phosphorylates the MAP Kinase on both threonine and tyrosine residues of the activation motif TEY. MEK1 and MEK2 are activated by phosphorylation of two serine residues (Ser 218/222 in MEK1 and Ser 222/226 in MEK2). These phosphorylation sites are substrates of the Raf family of kinases.

**Synonyms:** MAP kinase kinase 2, ERK activator kinase 2, MAPK/ERK kinase 2, MEK2, MKK2, MAP kinase kinase 2

**Product images:**



Detection of endogenous MEK2 Whole cell lysates of serum starved tumor cells (20.000 cells per lane) were applied to SDS-PAGE and transferred to a PVDF membrane. The immunoblot was probed with mab MEK2-8E8 (0.5 ug/ ml) for 1h at RT and developed by ECL (exp. time: 30 sec). lane 1: A431; lane 2: A549; lane 3: SKOV3; lane 4: OVCAR5; lane 5: HaCaT; lane 6: PC3; lane 7: HeLa; lane 8: HepG2