

Product datasheet for **AM00089PU-N**

MEK1 (MAP2K1) (incl. pos. control) Mouse Monoclonal Antibody [Clone ID: 10B1]

Product data:

Product Type:	Primary Antibodies
Clone Name:	10B1
Applications:	ELISA, WB
Recommended Dilution:	Western Blot: 1 µg/ml for HRPO/ECL detection. Recommended blocking buffer: Casein/Tween 20 based blocking and blot incubation buffer. Positive Control: Cell lysate from untreated SW480 cells. ELISA: 0.05 µg/ml.
Reactivity:	Canine, Human, Mouse, Rat
Host:	Mouse
Isotype:	IgG1
Clonality:	Monoclonal
Immunogen:	Synthetic peptide conjugated to KLH
Specificity:	This antibody specifically recognizes the N-terminus of MEK1 at 45 kDa.
Formulation:	PBS/0.09% Na-Azide/PEG and Sucrose/50% Glycerol State: Purified State: Liquid purified IgG
Concentration:	lot specific
Purification:	Size exclusion chromatography
Conjugation:	Unconjugated
Storage:	Store the antibody (aliquote in liquid nitrogen) at -80°C. Avoid repeated freezing and thawing. Thaw aliquots at 37°C. Thawed aliquots may be stored at 4°C up to 3 months.
Stability:	Shelf life: one year from despatch.
Gene Name:	mitogen-activated protein kinase kinase 1
Database Link:	Entrez Gene 5604 Human Q02750



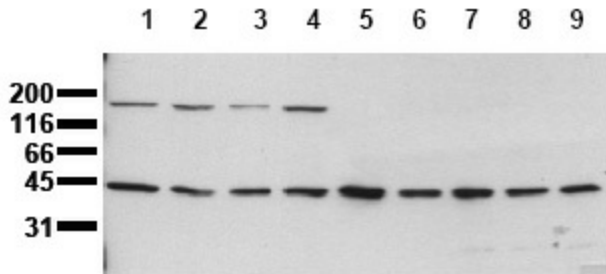
[View online »](#)

Background:

MEK (MAP Kinase Kinase) phosphorylates the MAP kinase on both threonine and tyrosine residues of the activation loop motif TEY. MEK1 and MEK2 are activated by phosphorylation of two serine residues (Ser 218/222 in MEK1 and Ser 222/226 in MEK2). These phosphorylation sites are substrates of the Raf family of kinases.

Synonyms:

MAPKK 1, ERK activator kinase 1, MAPK/ERK kinase 1, MEK1, PRKMK1, MAP kinase kinase 1

Product images:

Detection of endogenous MEK1 Whole cell lysates of serum starved tumor cells (20000 cells per lane) were applied to SDS-PAGE and transferred to PVDF membranes. Immunoblots were probed with mab 10B1 (0.5 ug/ ml) for 1h at RT and developed by ECL (exp. time: 30 sec). lane 1: HeLa; lane 2: HepG2; lane 3: HEK293; lane 4: SH-SY5Y; lane 5: MDCK; lane 6: PC12; lane 7: CMT 93; lane 8: Neuro 2A; lane 9: 3T3