

## Product datasheet for **AM00088PU-N**

### malE Mouse Monoclonal Antibody [Clone ID: 6E4]

#### Product data:

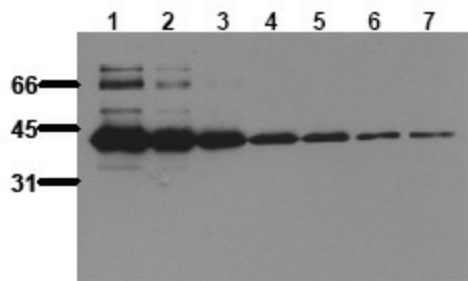
Product Type:	Primary Antibodies
Clone Name:	6E4
Applications:	ELISA, WB
Recommended Dilution:	<b>Western blot:</b> 0.5 µg/ml for HRPO/ECL detection. <i>Recommended blocking buffer:</i> Casein/Tween 20 based blocking and blot incubation buffer. <b>ELISA:</b> 0.05 µg/ml.
Reactivity:	Escherichia coli
Host:	Mouse
Isotype:	IgG1
Clonality:	Monoclonal
Immunogen:	Purified MBP (Maltose Binding Protein)
Specificity:	This antibody can be used for the detection of MBP fusion proteins.
Formulation:	1ml 2 x PBS containing 0.09% Sodium Azide, PEG and Sucrose State: Purified State: Lyophilized purified IgG fraction
Reconstitution Method:	Restore with 1 ml H <sub>2</sub> O (15 min, RT)
Purification:	Subsequent Thiophilic Adsorption and Size Exclusion Chromatography
Conjugation:	Unconjugated
Storage:	Store lyophilized (preferably in a desiccator) at -20°C and reconstituted (aliquote and freeze in liquid Nitrogen) at -80°C. Avoid repeated freezing and thawing. Thaw aliquots at 37°C. Thawed aliquots may be stored at 2-8°C up to 3 months.
Stability:	Shelf life: one year from despatch.
Predicted Protein Size:	43 kDa
Database Link:	<a href="#">POAEX9</a>
Background:	Maltose Binding Protein (MBP), the E. coli malE gene product, is widely used as fusion partner for the expression of recombinant proteins.



[View online »](#)

Synonyms: MMBP, Maltodextrin-binding protein, malE-Tag

**Product images:**



Antibody sensitivity: MBP was separated by SDS-PAGE and transferred to PVDF membranes. Immunoblots were probed with MBP antibody (6E4) Cat.-No AM00088PU-N (0.5 g/ ml) for 1h at RT and developed by ECL (exp. time: 30 sec). Lane 1: 100ng MBP Lane 2: 50ng Lan