

Product datasheet for **AM00083PU-N**

LEF1 Mouse Monoclonal Antibody [Clone ID: 2D12]

Product data:

Product Type:	Primary Antibodies
Clone Name:	2D12
Applications:	ELISA, WB
Recommended Dilution:	Western Blot: 0.5 µg/ml for HRPO/ECL detection. Recommended blocking buffer: Casein/Tween 20 based blocking and blot incubation buffer. ELISA: 0.1 µg/ml.
Reactivity:	Human
Host:	Mouse
Isotype:	IgG1
Clonality:	Monoclonal
Immunogen:	Recombinant LEF
Specificity:	This antibody specifically recognizes LEF at 55-57 kDa. It does not crossreact with TCF3 and TCF4.
Formulation:	PBS/0.09% Na-Azide/PEG and Sucrose/50% Glycerol State: Purified State: Liquid purified Ig
Concentration:	lot specific
Purification:	Size exclusion chromatography
Conjugation:	Unconjugated
Storage:	Store the antibody at -20°C. Avoid repeated freezing and thawing.
Stability:	Shelf life: one year from despatch.
Gene Name:	lymphoid enhancer binding factor 1
Database Link:	Entrez Gene 51176 Human Q9UJU2

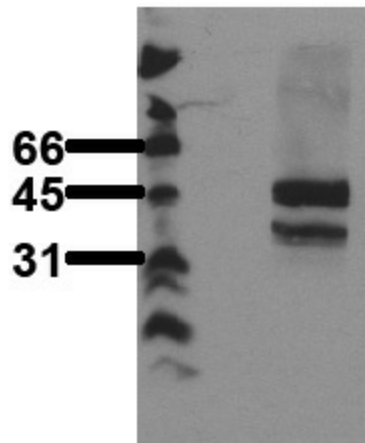


[View online »](#)

Background: LEF is a transcription factor of the LEF/TCF protein family. LEF interacts with cytoplasmic beta-catenin and regulates the expression of genes containing a LEF/TCF binding site. The formation of LEF - beta-catenin heterodimers is an important step in the wnt/wg signal transduction pathway.

Synonyms: Lymphoid enhancer-binding factor 1, LEF-1, T cell-specific transcription factor 1-alpha, TCF1-alpha

Product images:



Detection of endogenous LEF Whole cell lysates of serum starved Jurkat were applied to SDS-PAGE and transferred to PVDF membranes. Immunoblots were probed with mab 2D12 (0.5 ug/ ml) for 1h at RT and developed by ECL (exp. time: 30 sec).