

Product datasheet for **AM00072PU-N**

IGF1 Receptor (IGF1R) (C-term) (incl. pos. control) Mouse Monoclonal Antibody [Clone ID: 7G11]

Product data:

Product Type:	Primary Antibodies
Clone Name:	7G11
Applications:	WB
Recommended Dilution:	Western Blot: 0.5 µg/ml for HRPO/ECL detection. <i>Recommended blocking buffer:</i> Casein/Tween 20 based blocking and blot incubation buffer. <i>Included Positive Control:</i> Cell lysate from untreated A431 cells (See Protocols for more details).
Reactivity:	Human
Host:	Mouse
Isotype:	IgG1
Clonality:	Monoclonal
Immunogen:	Synthetic peptide conjugated to KLH.
Specificity:	This antibody specifically recognizes the C-terminus of IGF1 receptor.
Formulation:	1ml 2 x PBS State: Purified State: Lyophilized purified IgG fraction Stabilizer: PEG and Sucrose Preservative: 0.09% Sodium Azide
Reconstitution Method:	Restore with 1 ml H ₂ O (15 min, RT).
Purification:	Subsequent Thiophilic Adsorption and Size Exclusion Chromatography
Conjugation:	Unconjugated
Storage:	Store lyophilized (preferably in a desiccator) at -20°C and reconstituted (aliquote and freeze in liquid nitrogen) at -80°C. Avoid repeated freezing and thawing. Thaw aliquots at 37°C. Thawed aliquots may be stored at 4°C up to 3 months.
Stability:	Shelf life: one year from despatch.
Predicted Protein Size:	97 kDa
Gene Name:	insulin like growth factor 1 receptor



[View online »](#)

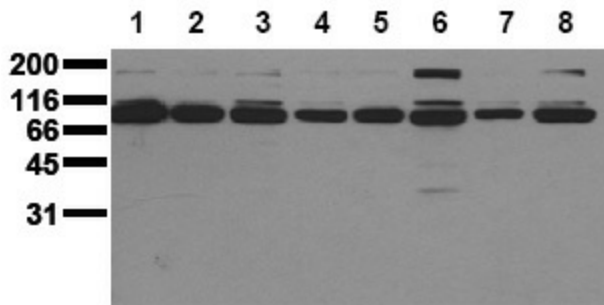
Database Link: [Entrez Gene 3480 Human P08069](#)

Background: The IGF1 receptor (IGF1R) is a heterodimeric receptor tyrosine kinase with an extracellular alpha-chain, a transmembrane domain and an intracellular beta-chain. The IGF1 receptor is activated upon binding of the peptide hormones IGF1 and 2, leading to autophosphorylation of tyrosine residue 1131, 1135, and 1136 in the activation loop of the beta-chain. Additional autophosphorylation sites such as tyrosine residue 950 and 1316 regulate the assembly of signal transduction complexes.

Synonyms: IGF-I receptor, IGF1 Receptor

Note: Protocol: **Positive Control Cell Lysate A431 Untreated**
Formulation: Lyophilized cell lysate from serum starved A431 cells.
Reconstitution: Restore by addition of 200 µl H₂O. After complete solubilization add 200 µl 2x SDS-PAGE sample buffer, mix and incubate at 90°C for 5 min.
Storage: Aliquote and store frozen. Avoid repeated freeze/thaw cycles.
Application: The positive control cell lysate is recommended for immunoblot applications. 20 µl of positive control cell lysate correspond to ca. 20.000 cells. Use 20 µl / lane (mini gel) for HRPO/ECL detection of the target proteins.
Note: The lyophilized cell lysates contain SDS and are not recommended for applications with native proteins such as immunoprecipitation.

Product images:



Detection of endogenous IGF1R Whole cell extracts of serum starved tumor cells (20.000 cells per lane) were applied to SDS-PAGE and transferred to PVDF membranes. Immunoblots were probed with mab IGF1R-7G11 (0.5 ug/ ml) for 1h at RT and developed by ECL (exp. time: 30 sec). lane 1: A431; lane 2: A549; lane 3: SKOV3; lane 4: OVCAR5; lane 5: HaCaT; lane 6: PC3; lane 7: HeLa; lane 8: HepG2