

Product datasheet for **AM00067PU-N**

GSK3 beta (GSK3B) pSer9 (incl. pos. control) Mouse Monoclonal Antibody [Clone ID: 3A8]

Product data:

Product Type:	Primary Antibodies
Clone Name:	3A8
Applications:	ELISA, WB
Recommended Dilution:	Western Blot: 0.5 µg/ml for HRPO/ECL detection. Recommended blocking buffer: Casein/Tween 20 based blocking and blot incubation buffer. ELISA: 0,05 µg/ml.
Reactivity:	Canine, Human, Mouse
Host:	Mouse
Isotype:	IgG1
Clonality:	Monoclonal
Immunogen:	Synthetic phosphopeptide conjugated to KLH.
Specificity:	This antibody specifically recognizes GSK3beta phosphorylated at Ser 9 at 46 kDa.
Formulation:	1 ml 2 x PBS / 0.09 % Na-azide / PEG and Sucrose State: Purified State: Lyophilized purified IgG
Reconstitution Method:	Restore with 1 ml H2O (15 min, RT).
Purification:	Size exclusion chromatography
Conjugation:	Unconjugated
Storage:	Store lyophilized (preferably in a desiccator) at -20°C and reconstituted (aliquote and freeze in liquid nitrogen) at -80°C. Avoid repeated freezing and thawing. Thaw aliquots at 37°C. Thawed aliquots may be stored at 4°C up to 3 months.
Stability:	Shelf life: one year from despatch.
Gene Name:	glycogen synthase kinase 3 beta
Database Link:	Entrez Gene 2932 Human P49841



[View online »](#)

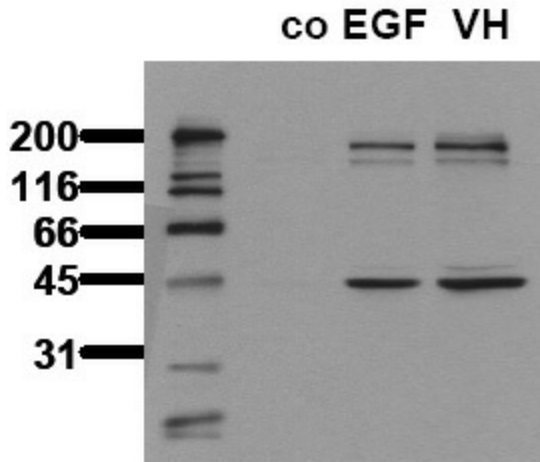
Background:

Glycogen Synthase Kinase 3 beta (GSK3beta) is a serine/threonine kinase that is acting independently of most signal transduction pathways. The activity of GSK3beta can be modulated by phosphorylation of Ser9 and Tyr215 in the activation loop. GSK3beta plays a crucial role in phosphorylation of beta-catenin and thus is an important kinase involved in the regulation of beta-catenin/wnt-signaling.

Synonyms:

GSK-3 beta, Glycogen synthase kinase-3 beta, GSK3B

Product images:



Phosphospecificity Whole cell extracts of control (co), EGF stimulated (EGF) or pervanadate treated (VH) A431 tumor cells were applied to SDS-PAGE (ca 20.000 cells per lane) and transferred to PVDF membranes. Immunoblots were probed with mab GSK-3A8 (0.5 ug/ ml) for 1h at RT and developed by ECL (exp. time: 30 sec).