

## Product datasheet for **AM00066PU-N**

### **GSK3 beta (GSK3B) (N-term) (incl. pos. control) Mouse Monoclonal Antibody [Clone ID: 11B9]**

#### **Product data:**

<b>Product Type:</b>	Primary Antibodies
<b>Clone Name:</b>	11B9
<b>Applications:</b>	ELISA, WB
<b>Recommended Dilution:</b>	ELISA: 0.05 µg/ml. Western Blot: 0.5 µg/ml for HRPO/ECL detection. Recommended blocking buffer: Casein/Tween 20 based blocking and blot incubation buffer. <i>Provided Positive Control.</i> Cell lysate from untreated HepG2 cells (See Protocols for more details).
<b>Reactivity:</b>	Canine, Human, Mouse, Rat
<b>Host:</b>	Mouse
<b>Isotype:</b>	IgG1
<b>Clonality:</b>	Monoclonal
<b>Immunogen:</b>	Synthetic phosphopeptide conjugated to KLH.
<b>Specificity:</b>	This antibody specifically recognizes GSK3beta at 46 kDa and does not crossreact with GSK3alpha.
<b>Formulation:</b>	1 ml 2 x PBS / 0.09% Sodium Azide / PEG and Sucrose State: Purified State: Lyophilized purified IgG fraction
<b>Reconstitution Method:</b>	Restore with 1 ml H <sub>2</sub> O (15 min, RT).
<b>Purification:</b>	Size Exclusion Chromatography
<b>Conjugation:</b>	Unconjugated
<b>Storage:</b>	Store lyophilized (preferably in a desiccator) at -20°C and reconstituted (aliquote and freeze in liquid nitrogen) at -80°C. Avoid repeated freezing and thawing. Thaw aliquots at 37°C. Thawed aliquots may be stored at 4°C up to 3 months.
<b>Stability:</b>	Shelf life: one year from despatch.
<b>Gene Name:</b>	glycogen synthase kinase 3 beta



[View online »](#)

**Database Link:** [Entrez Gene 2932 Human P49841](#)

**Background:** Glycogen Synthase Kinase 3 beta (GSK3beta) is a serine/threonine kinase that is acting independently of most signal transduction pathways. The activity of GSK3beta can be modulated by phosphorylation of Ser9 and Tyr215 in the activation loop. GSK3beta plays a crucial role in phosphorylation of beta-catenin and thus is an important kinase involved in the regulation of beta-catenin/wnt-signaling.

**Synonyms:** GSK-3 beta, Glycogen synthase kinase-3 beta, GSK3B

**Note:** Protocol: **Positive Control: Cell lysate from untreated HepG2 cells**

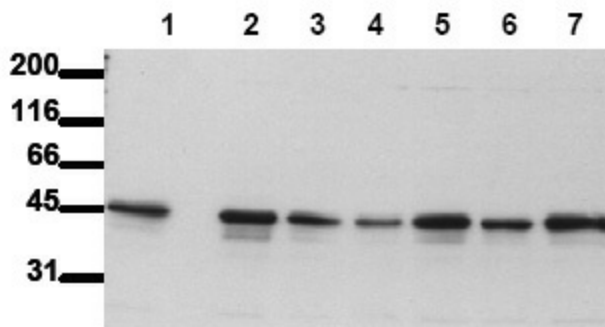
**Format:** Lyophilized cell lysate from serum starved HepG2 cells.

**Reconstitution:** Restore by addition of 200 µl H<sub>2</sub>O. After complete solubilization add 200 µl 2x SDS-PAGE sample buffer, mix and incubate at 90°C for 5 min.

**Application:** The positive control cell lysate is recommended for immunoblot applications. 20 µl of positive control cell lysate correspond to ca. 20.000 cells. Use 20 µl/lane (mini gel) for HRPO/ECL detection of the target proteins. Please NOTE: The lyophilized cell lysates contain SDS and are not recommended for applications with native proteins such as in immunoprecipitation.

**Storage:** Aliquot reconstituted product and store frozen. Avoid repeated freezing and thawing

**Product images:**



Detection of Endogenous GSK3 beta: Whole cell lysates of serum starved tumor cells (20.000 cells per lane) were applied to SDS-PAGE and transferred to PVDF membranes. Immunoblots were probed with mab GSK3-11B9 (0.5 ug/ ml) for 1h at RT and developed by ECL (exp. time: 30 sec). Lane 1: A431 Lane 2:SW480 Lane 3: SW620 Lane 4: HT29 Lane 5: MCF7 Lane 6: MDA-MB-231 Lane 7: T47D