

## Product datasheet for **AM00064PU-N**

### **GSK3 alpha (GSK3A) (incl. pos. control) Mouse Monoclonal Antibody [Clone ID: 10C1]**

#### Product data:

Product Type:	Primary Antibodies
Clone Name:	10C1
Applications:	WB
Recommended Dilution:	<b>Immunoblotting:</b> 0.5 µg/ml for HRPO/ECL detection. <i>Recommended blocking buffer:</i> Casein/Tween 20 based blocking and blot incubation buffer AS00002BU-N or AS00002BU-L. <b>Immunocytochemistry.</b> <i>Included Positive Control:</i> Cell lysate from untreated SKOV-3 cells (See Protocols for more details).
Reactivity:	Canine, Human, Mouse, Rat
Host:	Mouse
Isotype:	IgG1
Clonality:	Monoclonal
Immunogen:	Peptide conjugated to hemocyanin
Specificity:	This antibody specifically recognizes GSK3-alpha phosphorylation independent at 51 kDa. Mab GSK3a-10C1 does not crossreact with GSK3-beta.
Formulation:	PBS containing 0.09% Sodium Azide/PEG and Sucrose/50% Glycerol State: Purified State: Liquid purified IgG fraction.
Concentration:	lot specific
Purification:	Subsequent Ultrafiltration and Size Exclusion Chromatography
Conjugation:	Unconjugated
Storage:	Store the antibody (in aliquots) at -20°C. Avoid repeated freezing and thawing.
Stability:	Shelf life: one year from despatch.
Predicted Protein Size:	51 kDa
Gene Name:	glycogen synthase kinase 3 alpha



[View online »](#)

**Database Link:** [Entrez Gene 2931 Human P49840](#)

**Background:** Glycogen Synthase Kinase 3 (GSK3) exists in two isoforms, alpha and beta (GSK3alpha, GSK3beta). GSK3 is a serine/threonine kinase that becomes phosphorylated by PKB/akt upon activation of the PI3K signal transduction pathway. Phosphorylation of GSK3alpha at serine 21 or GSK3beta at serine 9, respectively, leads to inhibition of kinase activity of GSK3.

**Synonyms:** Glycogen synthase kinase-3 alpha, GSK3A, GSK-3 alpha, Factor A

**Note:** Protocol: **Positive Control Provided: Cell lysate from untreated SKOV-3 cells**

**Format:** Lyophilized cell lysate from serum starved SKOV-3 cells.

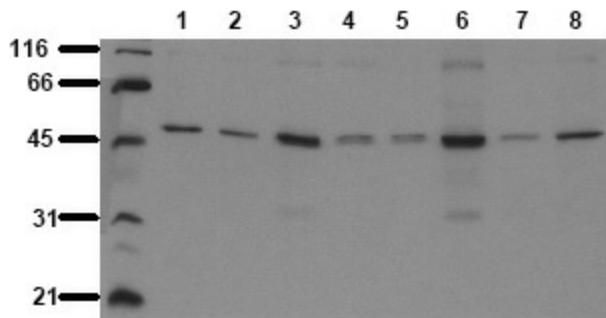
**Reconstitution:** Restore by addition of 200 µl H<sub>2</sub>O. After complete solubilization add 200 µl 2x SDS-PAGE sample buffer, mix and incubate at 90°C for 5 min.

**Storage:** Aliquote and store frozen.  
Avoid repeated freeze/thaw cycles.

**Application:** The positive control cell lysate is recommended for immunoblot applications. 20 µl of positive control cell lysate correspond to ca. 80.000 cells. Use 20 µl / lane (mini gel) for HRPO/ECL detection of the target proteins.

**Please note:** The lyophilized cell lysates contain SDS and are not recommended for applications with native proteins such as immunoprecipitation.

**Product images:**



Detection of endogenous GSK3alpha Whole cell lysates of serum starved tumor cells (20.000 cells per lane) were applied to SDS-PAGE and transferred to a PVDF membrane. The immunoblot was probed with mab GSK3a-10C1 (0.5 ug/ ml) for 1h at RT and developed by ECL (exp. time: 30 sec). Lane 1: A431 Lane 2: A549 Lane 3: SKOV-3 Lane 4: OVCAR-5 Lane 5: HaCaT Lane 6: PC3M Lane 7: Hela Lane 8: HepG2