

Product datasheet for **AM00061PU-N**

c Fos (FOS) pSer374 (incl. pos. control) Mouse Monoclonal Antibody [Clone ID: 34E4]

Product data:

Product Type:	Primary Antibodies
Clone Name:	34E4
Applications:	ELISA, IHC, WB
Recommended Dilution:	<u>Western Blot</u> : 0.5 µg/ml for HRPO/ECL detection. Recommended blocking buffer: Casein/Tween 20 based blocking and blot incubation buffer. <u>ELISA</u> : 0.1 µg/ml (protein ELISA). <u>Immunohistochemistry on frozen sections</u> .
Reactivity:	Canine, Human
Host:	Mouse
Isotype:	IgG1
Clonality:	Monoclonal
Immunogen:	Synthetic phosphopeptide conjugated to KLH.
Specificity:	This antibody specifically interacts with c-Fos phosphorylated at serine 374.
Formulation:	1 ml 2 x PBS / 0.09 % Na-azide / PEG and Sucrose State: Purified State: Lyophilized purified IgG
Reconstitution Method:	Restore with 1 ml H ₂ O (15 min, RT).
Purification:	Size exclusion chromatography
Conjugation:	Unconjugated
Storage:	Store lyophilized (preferably in a desiccator) at -20°C and reconstituted (aliquote and freeze in liquid nitrogen) at -80°C. Avoid repeated freezing and thawing. Thaw aliquots at 37°C. Thawed aliquots may be stored at 4°C up to 3 months.
Stability:	Shelf life: one year from despatch
Gene Name:	Fos proto-oncogene, AP-1 transcription factor subunit
Database Link:	<u>Entrez Gene 2353 Human P01100</u>



[View online »](#)

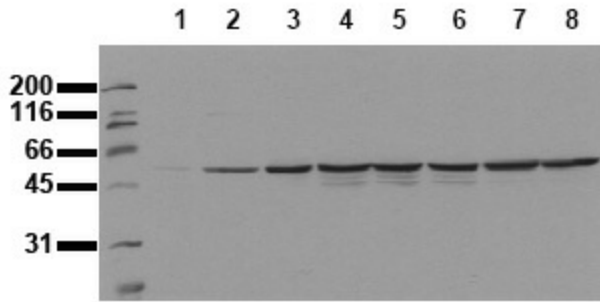
Background:

The immediated early gene product c-Fos is expressed following mitogenic stimulation. c-Fos functions as a sensor for MAPK signal duration. When MAPK activation is transient, MAPK activity declines before accumulation of the c-Fos protein. When MAPK activation is sustained, c-Fos is phosphorylated by MAPK at serine 374. Phosphorylation stabilizes the Fos protein and primes c-Fos for additional phosphorylation at threonine 325.

Synonyms:

FOS, G0S7

Product images:



fos activation Serum starved HepG2 cells were incubated with 10 ng/ml EGF for the indicated times. Whole cell lysates were prepared with lysis buffer V19 and separated by SDS-PAGE (ca 20.000 cells/lane). Immunoblots were probed with mab fos-34E4 (0.5 ug/ ml) for 1h at room temperature and developed by ECL (exp. time: 30 sec). lane 1: control; lane 2: 5 min EGF; lane 3: 15 min EGF; lane 4: 30 min EGF; lane 5: 1h EGF; lane 6: 2h EGF lane 7: 4h EGF; lane 8: 8h EGF