

## Product datasheet for **AM00057PU-N**

### **ErbB 4 (ERBB4) pTyr1242 (incl. pos. Control) Mouse Monoclonal Antibody [Clone ID: 4C6]**

#### Product data:

Product Type:	Primary Antibodies
Clone Name:	4C6
Applications:	WB
Recommended Dilution:	<b>Western Blot:</b> 0.5 µg/ml for HRPO/ECL detection. <b>Recommended blocking buffer:</b> Casein/Tween 20 based blocking and blot incubation buffer. <b>Included Positive control:</b> Cell lysate from EGF-treated MDA-MB 468 cells (See "Protocols")
Reactivity:	Human
Host:	Mouse
Isotype:	IgG1
Clonality:	Monoclonal
Immunogen:	Phosphopeptide conjugated to hemocyanin. <b>Epitope:</b> Phospho-Tyrosine 1242 NPDpYWNH
Specificity:	This antibody specifically recognizes erbB4 phosphorylated on Tyr 1242 at 180 kDa.
Formulation:	PBS containing 0.09% Sodium Azide/PEG and Sucros/50% Glycerol State: Purified State: Liquid purified IgG fraction
Concentration:	lot specific
Purification:	Size Exclusion Chromatography
Conjugation:	Unconjugated
Storage:	Upon receipt, store undiluted (in aliquots) at -20°C. Avoid repeated freezing and thawing.
Stability:	Shelf life: one year from despatch.
Gene Name:	erb-b2 receptor tyrosine kinase 4
Database Link:	<a href="#">Entrez Gene 2066 Human Q15303</a>



[View online »](#)

**Background:** erbB4/Her4 is a member of the receptor tyrosine kinase subfamily that includes EGFR, erbB2/her2, and erbB3/Her3. erbB4 is a receptor for Neuregulin 1 (NRG1) and regulates cell proliferation and differentiation. Tyr 1242 is a potential SHC binding site which leads to MAPK signalling pathway.

**Synonyms:** p180erbB4, c-ErbB-4, HER-4

**Note:** Protocol: ***Included Positive Control: Cell lysate from EGF-treated MDA-MB 468 cells***

**Formulation**

Lyophilized cell lysate from MDA-MB-468 cells.  
Serum starved cells were treated for 15 min with EGF.

**Reconstitution**

Reconstitute by adding 200 µl H<sub>2</sub>O. After complete solubilization add 200 µl 2x SDS-Page sample buffer, mix and incubate at 90°C for 5 min.

**Aliquote and store frozen. Avoid repeated freezing and thawing.**

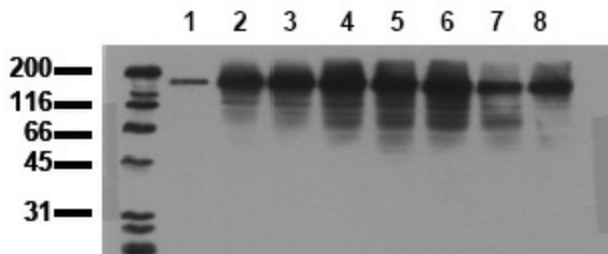
**Application**

The positive control cell lysate is recommended for immunoblot applications. 20 µl of positive control cell lysate correspond to ca. 20.000 cells.

Use 20 µl/lane (mini gel) for HRPO/ECL detection of the target proteins.

Please note: The lyophilized cell lysates contain SDS and **are not recommended** for applications with native proteins such as immunoprecipitation.

**Product images:**



erbB4 activation Serum starved MDA-MB468 cells were incubated with 10 ng/ml EGF for the indicated times. Whole cell lysates were prepared with lysis buffer V19 and separated by SDS-PAGE (ca 20.000 cells/lane). The immunoblot was probed with mab erbB4 - 4C6 (0.5 µg/ ml) for 1h at RT and developed by ECL (exp. time: 30 sec). Lane 1: control; lane 2: 5 min EGF; lane 3: 15 min EGF; lane 4: 30 min EGF; lane 5: 1h EGF; lane 6: 2h EGF lane 7: 4h EGF; lane 8: 8h EGF