

## Product datasheet for **AM00056PU-N**

### **ErbB 4 (ERBB4) (1230-1250) (incl. pos. control) Mouse Monoclonal Antibody [Clone ID: 6C5]**

#### Product data:

Product Type:	Primary Antibodies
Clone Name:	6C5
Applications:	WB
Recommended Dilution:	<b>Western Blot:</b> 0.5 µg/ml for HRPO/ECL detection. <u>Recommended blocking buffer:</u> Casein/Tween 20 based blocking and blot incubation buffer. <i>Provided Positive Control:</i> Cell lysate from untreated T47D cells (please see "Protocols" for details).
Reactivity:	Human
Host:	Mouse
Isotype:	IgG1
Clonality:	Monoclonal
Immunogen:	Peptide conjugated to hemocyanin. Epitope: Amino acids 1230-1250
Specificity:	This antibody specifically recognizes erbB4 at 180 kDa.
Formulation:	1 ml PBS containing 0.09% Sodium Azide as preservative, PEG and Sucrose State: Purified State: Lyophilized purified IgG fraction
Reconstitution Method:	Restore with 1 ml H <sub>2</sub> O (15 min, RT).
Purification:	Size Exclusion Chromatography
Conjugation:	Unconjugated
Storage:	Store lyophilized (preferably in a desiccator) at -20°C and reconstituted (aliquote and freeze in liquid nitrogen) at -80°C. Avoid repeated freezing and thawing. Thaw aliquots at 37°C. Thawed aliquots may be stored at 4°C up to 3 months.
Stability:	Shelf life: one year from despatch.
Gene Name:	erb-b2 receptor tyrosine kinase 4



[View online »](#)

**Database Link:** [Entrez Gene 2066 Human Q15303](#)

**Background:** erbB4/Her4 is a member of the receptor tyrosine kinase subfamily that includes EGFR, erbB2/Her2, and erbB3/Her3. erbB4 is a receptor for Neuregulin 1 (NRG1) and regulates cell proliferation and differentiation.

**Synonyms:** p180erbB4, c-ErbB-4, HER-4

**Note:** Protocol: **Positive Control: Cell lysate from T47D untreated Lot No. 101101**

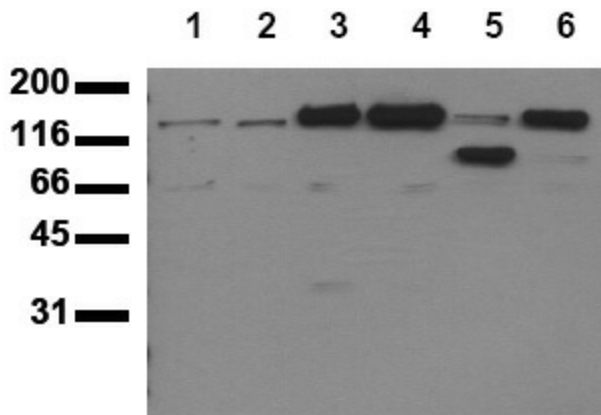
**Format:** Lyophilized cell lysate from Serum starved T47D cells.

**Reconstitution:** Restore by addition of 200  $\mu$ l H<sub>2</sub>O. After complete solubilization add 200  $\mu$ l 2x SDS-PAGE sample buffer, mix and incubate at 90°C for 5 min.

**Application:** The positive control cell lysate is recommended for immunoblot applications. 20  $\mu$ l of positive control cell lysate correspond to ca. 20,000 cells. Use 20  $\mu$ l/lane (mini gel) for HRPO/ECL detection of the target proteins. Please NOTE: The lyophilized cell lysates contain SDS and are not recommended for applications with native proteins such as in immunoprecipitation.

**Storage:** Aliquote reconstituted product and store frozen. Avoid repeated freezing and thawing

**Product images:**



Detection of endogenous erbB4: Whole cell extracts of serum starved tumor cells (20,000 cells per lane) were applied to SDS-PAGE and transferred to a PVDF membrane. The immunoblot was probed with mab erbB4-6C5 (0.5  $\mu$ g/ml) for 1h at 15-22°C and developed by ECL (exp. time: 30 sec). Lane 1: MDA-MB 231 Lane 2: MDA-MB 468 Lane 3: MCF-7 Lane 4: T47D Lane 5: SW480 Lane 6: SW620