

Product datasheet for **AM00028PU-N**

ANKRD6 (incl. pos. control) Mouse Monoclonal Antibody [Clone ID: 6G8]

Product data:

Product Type:	Primary Antibodies
Clone Name:	6G8
Applications:	ELISA, WB
Recommended Dilution:	ELISA: 0.1 mg/ml (protein ELISA). Western Blot: 0.5 µg/ml for HRPO/ECL detection. <u>Recommended blocking buffer:</u> Casein/Tween 20 based blocking and blot incubation buffer. This product contains a Positive Control for Immunoblot Applications (for details see "Protocols")
Reactivity:	Canine, Human, Mouse, Rat
Host:	Mouse
Isotype:	IgG1
Clonality:	Monoclonal
Immunogen:	Synthetic peptide conjugated to KLH. Epitope: amino acids 100-123.
Specificity:	This antibody specifically recognizes Diversin at 75 kDa.
Formulation:	PBS containing 0.09% Sodium Azide, PEG and Sucrose/50% Glycerol State: Purified State: Liquid purified IgG fraction
Concentration:	lot specific
Purification:	Size Exclusion Chromatography
Conjugation:	Unconjugated
Storage:	Store the antibody at -20°C. Avoid repeated freezing and thawing.
Stability:	Shelf life: one year from despatch.
Gene Name:	ankyrin repeat domain 6
Database Link:	<u>Entrez Gene 22881 Human Q9Y2G4</u>



[View online »](#)

Background: Diversin 1 is a 75 kDa protein that acts in both canonical Wnt and Wnt/JNK signaling. Diversin recruits casein kinase 1 epsilon (CK1ε) to the beta-catenin degradation complex of axin/conductin and GSK3beta, thus leading to N-terminal phosphorylation and subsequent degradation of beta-Catenin.

Synonyms: KIAA0957

Note: Protocol: **Positive Control: SKOV-3 Untreated**

Formulation:

Lyophilized Cell Lysate from Serum starved SKOV-3 Cells.

Stability:

Reconstitute by addition of 200 µl H₂O. After complete solubilization add 200 µl 2x SDS-PAGE sample buffer, mix and incubate at 90°C for 5 min.

Application:

The Positive Control cell lysate is recommended for immunoblot applications. 20µl of positive control cell lysate corresponds to ca 20.000 cells.

Use 20µl/lane (mini gel) for HRPO/ECL detection of the target proteins.

Note: The lyophilized cell lysates contain SDS and **are not recommended** for applications with native proteins such as Immunoprecipitation.

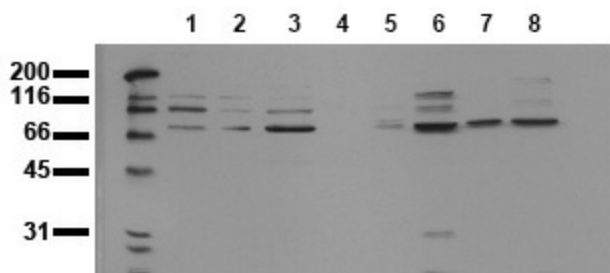
Storage:

Aliquote and store frozen.

Avoid repeated freeze/thaw cycles.

Shelf life: one year from despatch.

Product images:



Detection of endogenous Diversin Whole cell lysates of serum starved tumor cells (20.000 cells per lane) were applied to SDS-PAGE and transferred to a PVDF membrane. The immunoblot was probed with mab Div1-6G8 (0.5 ug/ ml) for 1h at RT and developed by ECL (exp. time: 30 sec). Lane 1: A431 Lane 2: A549 Lane 3: SKOV3 Lane 4: OVCAR5 Lane 5: HaCaT Lane 6: PC3 Lane 7: HeLa Lane 8: HepG2