

Product datasheet for **AM00027PU-N**

CREB1 pSer133/Ser63 (incl. pos. control) Mouse Monoclonal Antibody [Clone ID: 10E9]

Product data:

Product Type:	Primary Antibodies
Clone Name:	10E9
Applications:	ELISA, WB
Recommended Dilution:	Western Blot: 0.5 µg/ml for HRPO/ECL detection. Recommended blocking buffer: Casein/Tween 20 based blocking and blot incubation buffer. ELISA: 0.05 µg/ml.
Reactivity:	Canine, Human, Mouse
Host:	Mouse
Isotype:	IgG1
Clonality:	Monoclonal
Immunogen:	Synthetic phosphopeptide conjugated to KLH.
Specificity:	This antibody specifically recognizes CREB phosphorylated at serine 133 and ATF1 phosphorylated at serine 63 in Western blot and ELISA applications.
Formulation:	1 ml 2 x PBS / 0.09 % Na-azide / PEG and Sucrose State: Purified State: Lyophilized purified IgG
Reconstitution Method:	Restore with 1 ml H ₂ O (15 min, RT).
Purification:	Size exclusion chromatography
Conjugation:	Unconjugated
Storage:	Store lyophilized (preferably in a desiccator) at -20°C and reconstituted (aliquote and freeze in liquid nitrogen) at -80°C. Avoid repeated freezing and thawing. Thaw aliquots at 37°C. Thawed aliquots may be stored at 4°C up to 3 months.
Stability:	Shelf life: one year from despatch.
Gene Name:	cAMP responsive element binding protein 1
Database Link:	Entrez Gene 1385 Human P16220

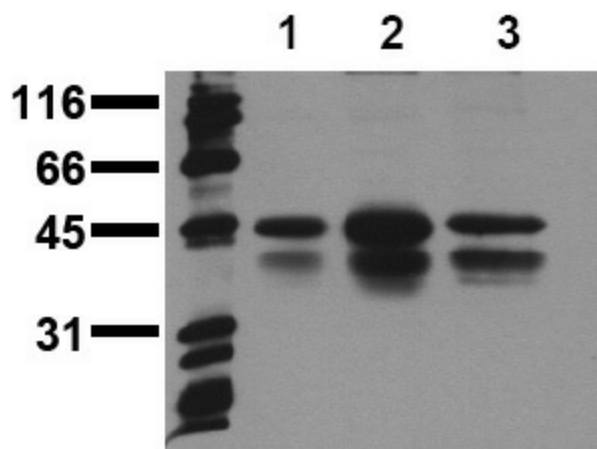


[View online »](#)

Background: The transcription factor CREB activates transcription in response to a variety of extracellular signals. Various kinases, including Protein kinase A (PKA) , and CaM kinase II, regulate CREB activity by phosphorylation of serine 133.
Molecular Weight: CREB:43kDa; ATF1:38kDa

Synonyms: cAMP Response Element-Binding protein, CREB1, CREB-1

Product images:



Phosphospecificity Whole cell extracts of control (1), EGF stimulated (2) or pervanadate treated (3) A549 tumor cells were applied to SDS-PAGE (ca 20.000 cells per lane) and transferred to a PVDF membrane. The immunoblot was probed with mab CREB/ATF1-10E9 (0.5 ug/ ml) for 1h at RT and developed by ECL (exp. time: 30 sec).