

Product datasheet for **AM00025PU-N**

TPTEP2-CSNK1E (incl. pos. control) Mouse Monoclonal Antibody [Clone ID: 4D7]

Product data:

Product Type:	Primary Antibodies
Clone Name:	4D7
Applications:	ELISA, WB
Recommended Dilution:	ELISA: 0.1 µg/ml. Western blot: Use at 0.5 µg/ml for HRPO/ECL detection. Detects a band at 45kD. <i>Recommended blocking buffer:</i> Casein/Tween 20 based blocking and blot incubation buffer. Included Positive Control: Cell lysate from Untreated A431 cells.
Reactivity:	Canine, Human, Mouse, Rat
Host:	Mouse
Isotype:	IgG1
Clonality:	Monoclonal
Immunogen:	Peptide (aa 355 - 380 of CK1e) conjugated to hemocyanin
Specificity:	Mab CK1e-4D7 specifically recognizes the epsilon isoform of CK1.
Formulation:	1ml 2xPBS containing 0.09% Sodium Azide, PEG and Sucrose State: Purified State: Lyophilized purified IgG fraction
Reconstitution Method:	Reconstitute with 1 ml H ₂ O (15 min, RT)
Concentration:	lot specific
Purification:	Purified from serum-free cell culture supernatant by subsequent thiophilic adsorption and size exclusion chromatography.
Conjugation:	Unconjugated
Storage:	Store lyophilized (preferably in a desiccator) at -20°C and reconstituted (aliquote and freeze in liquid nitrogen) at -80°C. Avoid repeated freezing and thawing. Thaw aliquots at 37°C. Thawed aliquots may be stored at 4°C up to 3 months.
Stability:	Shelf life: one year from despatch.
Gene Name:	TPTEP2-CSNK1E readthrough



[View online »](#)

Database Link: [Entrez Gene 102800317 Human P49674](#)

Background: Casein kinases are operationally defined by their preferential utilization of acidic proteins such as caseins as substrates. It can also phosphorylate a large number of proteins and participates in Wnt signaling.

Synonyms: CKI-epsilon, CKIe, CSNK1E

Note: The lyophilized cell lysates (see below) contain SDS and are not recommended for applications with native proteins such as Immunoprecipitation.

Protocol: **Positive Control:** Cell lysate from Untreated A431 cells.

Format: Lyophilized cell lysate from Serum starved A431 cells

Reconstitution: Restore by addition of 200 µl H₂O. After complete solubilization add 200 µl 2x SDS-PAGE sample buffer, mix and incubate at 90°C for 5 min.

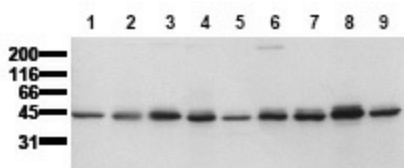
Aliquote and store frozen. Avoid repeated freeze/thaw cycles.

Application: The positive control cell lysate is recommended for immunoblot applications. 20 µl of positive control cell lysate correspond to ca. 20.000 cells.

Use 20 µl/lane (mini gel) for HRPO/ECL detection of the target proteins.

Please NOTE: The lyophilized cell lysates contain SDS and are not recommended for applications with native proteins such as in immunoprecipitation.

Product images:



Detection of endogenous Casein Kinase 1 epsilon: Whole cell lysates of serum starved tumor cells (20.000 cells per lane) were applied to SDS-PAGE and transferred to a PVDF membrane. The immunoblot was probed with mab CK1e-4D7 (0.5 µg/ ml) for 1h at RT and developed by ECL (exp. time: 30 sec) lane 1: HeLa; lane 2: HepG2; lane 3: HEK293; lane 4: SH-SY5Y; lane 5: MDCK; lane 6: PC12; lane 7: CMT 93; lane 8: Neuro 2A; lane 9: NIH 3T3.