

## Product datasheet for **AM00017PU-N**

### **beta Catenin (CTNNB1) (dephospho 27-37) (incl. pos. control) Mouse Monoclonal Antibody [Clone ID: 8E4]**

#### Product data:

Product Type:	Primary Antibodies
Clone Name:	8E4
Applications:	ELISA, IF, IHC, WB
Recommended Dilution:	<u>Western Blot</u> : 0.5 µg/ml for HRPO/ECL detection. Recommended blocking buffer: Casein/Tween 20 based blocking and blot incubation buffer. <u>ELISA</u> : 0.05 µg/ml. <u>Immunocytochemistry</u> : 1 - 10 µg/ml. <u>Immunohistochemistry on paraffin sections</u> .
Reactivity:	Human, Mouse, Rat
Host:	Mouse
Isotype:	IgG1
Clonality:	Monoclonal
Immunogen:	Synthetic peptide conjugated to KLH.
Specificity:	This antibody reacts to β-Catenin.
Formulation:	1 ml 2 x PBS / 0.09% Sodium Azide / PEG and Sucrose State: Purified State: Lyophilized purified Ig
Reconstitution Method:	Restore with 1 ml H <sub>2</sub> O (15 min, RT).
Purification:	Size exclusion chromatography
Conjugation:	Unconjugated
Storage:	Store lyophilized (preferably in a desiccator) at -20°C and reconstituted (aliquote and freeze in liquid nitrogen) at -80°C. Avoid repeated freezing and thawing. Thaw aliquots at 37°C. Thawed aliquots may be stored at 4°C up to 3 months.
Stability:	Shelf life: one year from despatch.
Gene Name:	catenin beta 1



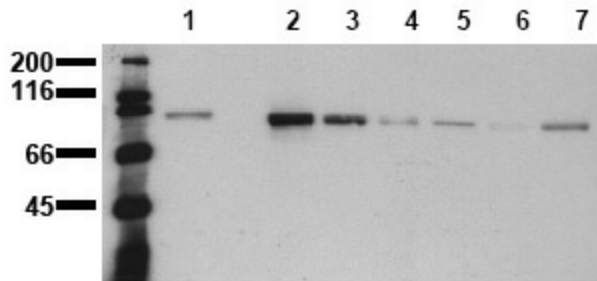
[View online »](#)

**Database Link:** [Entrez Gene 1499 Human P35222](#)

**Background:** The  $\alpha$ -,  $\beta$ - and  $\gamma$ -catenins are cytoplasmic proteins mediating the interaction of Ca<sup>2+</sup>-dependent transmembrane adhesion molecules (cadherins) with the cytoskeletal network. The direct interaction of  $\beta$ -catenin with the cytoplasmic domain of cadherins plays a crucial role for cell-cell adhesion and signal transmission between neighbouring cells. Recent studies indicate that  $\beta$ -catenin may also play a role in tumorigenesis since it forms complexes with the tumor suppressor gene product APC.  $\beta$ -catenin directly interacts and constitutively activates transcription factors of the TCF/LEF gene family. Thus it is proposed that  $\beta$ -catenin plays a dual role not only in the maintenance and regulation of cell-cell interactions but also in the regulation of gene activity.

**Synonyms:** CTNNB1, CTNNB, Beta-catenin

**Product images:**



Detection of endogenous  $\beta$ -Catenin Whole cell lysates of serum starved tumor cells (20.000 cells per lane) were applied to SDS-PAGE and transferred to a PVDF membrane. The immunoblot was probed with mab b-Cat-8E4 (0.5 ug/ ml) for 1h at RT and developed by ECL (exp. time: 30 sec). lane 1: A431; lane 2:SW480; lane 3: SW620; lane 4: HT29; lane 5: MCF7; lane 6: MDA-MB231; lane 7: T47D