

Product datasheet for **AM00014PU-N**

alpha 1 Catenin (CTNNA1) (incl. pos. control) Mouse Monoclonal Antibody [Clone ID: 15D9]

Product data:

Product Type:	Primary Antibodies
Clone Name:	15D9
Applications:	ELISA, IF, IP, WB
Recommended Dilution:	Western Blot: 0.5 µg/ml for HRPO/ECL detection. Recommended blocking buffer: Casein/Tween 20 based blocking and blot incubation buffer. Included Positive Control: Cell lysate from untreated A431 cells. ELISA: 0.05 µg/ml. Immunoprecipitation: 1-10 µg per 10e6 vanadate-treated A431 cells. Immunocytochemistry: 0.1-1 µg/ml. Mab Anti-Catenin Clone 15D9 may tolerate formaldehyd.
Reactivity:	Canine, Human, Mouse, Rat
Host:	Mouse
Isotype:	IgG1
Clonality:	Monoclonal
Immunogen:	Recombinant α -Catenin
Specificity:	This antibody specifically recognizes α -Catenin in Western blot at 102 kDa.
Formulation:	1 ml 2x PBS / 0.09% Sodium Azide / PEG and Sucrose State: Purified State: Lyophilized purified Ig fraction
Reconstitution Method:	Restore with 1 ml H ₂ O (15 min, RT).
Purification:	Size Exclusion Chromatography
Conjugation:	Unconjugated
Storage:	Store lyophilized (preferably in a desiccator) at -20°C and reconstituted (aliquote and freeze in liquid nitrogen) at -80°C. Avoid repeated freezing and thawing. Thaw aliquots at 37°C. Thawed aliquots may be stored at 4°C up to 3 months.
Stability:	Shelf life: one year from despatch.



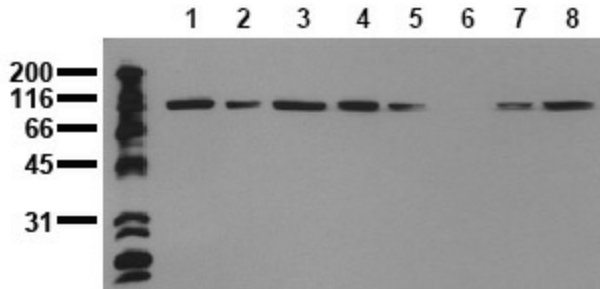
[View online »](#)

Database Link: [Entrez Gene 1495 Human P35221](#)

Background: The α -, β - and γ -catenins are cytoplasmic proteins mediating the interaction of Ca²⁺-dependent transmembrane adhesion molecules (cadherins) with the cytoskeletal network. The N-terminus of α -catenin directly interacts with exon 3 of β -catenin. The C-terminus of α -catenin interacts with the actin filament network.

Synonyms: Alpha E-catenin, Alpha Catenin

Product images:



Detection of endogenous alpha catenin: Whole cell lysates of serum starved tumor cells (20,000 cells per lane) were applied to SDS-PAGE and transferred to a PVDF membrane. The immunoblot was probed with mab a-Cat-15D9 (0.5 ug/ ml) for 1h at RT and developed by ECL (exp. time: 30 sec). lane 1: A431; lane 2: A549; lane 3: SKOV3; lane 4: OVCAR5; lane 5: HaCaT; lane 6: PC3; lane 7: HeLa; lane 8: HepG2