

## Product datasheet for **AM00013PU-N**

### **N Cadherin (CDH2) (incl. pos. control) Mouse Monoclonal Antibody [Clone ID: 7E9]**

#### **Product data:**

Product Type:	Primary Antibodies
Clone Name:	7E9
Applications:	WB
Recommended Dilution:	<b>Immunoblotting:</b> 0.5 µg/ml for HRPO/ECL detection. <i>Recommended blocking buffer:</i> Casein/Tween 20 based blocking and blot incubation buffer. <i>Included Positive Control:</i> Cell lysate from untreated SH-SY5Y cells (See Protocols for more details).
Reactivity:	Human, Mouse
Host:	Mouse
Isotype:	IgG1
Clonality:	Monoclonal
Immunogen:	Peptide conjugated to hemocyanin. Epitope: Cytoplasmic domain
Specificity:	This antibody specifically recognizes N-Cadherin at 127 kDa.
Formulation:	1 ml 2 x PBS / 0.09% Sodium Azide / PEG and Sucrose State: Purified State: Lyophilized purified IgG fraction.
Reconstitution Method:	Restore with 1 ml H <sub>2</sub> O (15 min, RT).
Purification:	Subsequent Ultrafiltration and Size Exclusion Chromatography.
Conjugation:	Unconjugated
Storage:	Store lyophilized (preferably in a desiccator) at -20°C and reconstituted (aliquote and freeze in liquid nitrogen) at -80°C. Thaw aliquots at 37°C. Thawed aliquots may be stored at 4°C up to 3 months. Avoid repeated freezing and thawing.
Stability:	Shelf life: one year from despatch.
Gene Name:	cadherin 2
Database Link:	<a href="#">Entrez Gene 1000 Human P19022</a>



[View online »](#)

**Background:** Cadherins are a family of transmembrane glycoproteins that play a key role in calcium-dependent cell-cell adhesion. Several members of the cadherin family have been identified so far, including E- (epithelial), P- (placental), N- (neuronal), and M- (muscle) cadherin.

**Synonyms:** CDH2, CDHN, NCAD, Neural cadherin, CDw325, Cadherin N, N-Cadherin

**Note:** Protocol: **Positive Control: Cell lysate from untreated SH-SY5Y cells**

**Format:** Lyophilized cell lysate from serum starved SH-SY5Y cells.

**Reconstitution:** Restore by addition of 200 µl H<sub>2</sub>O. After complete solubilization add 200 µl 2x SDS-PAGE sample buffer, mix and incubate at 90°C for 5 min.

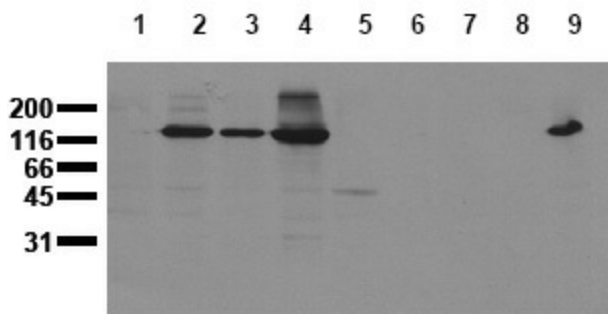
**Application:** The positive control cell lysate is recommended for immunoblot applications. 20 µl of positive control cell lysate correspond to ca. 20.000 cells.

Use 20 µl/lane (mini gel) for HRPO/ECL detection of the target proteins.

Please NOTE: The lyophilized cell lysates contain SDS and are not recommended for applications with native proteins such as in immunoprecipitation.

**Storage:** Aliquote reconstituted product and store frozen. Avoid repeated freezing and thawing.

**Product images:**



Detection of endogenous N-Cadherin: Whole cell lysates of serum starved tumor cells (20.000 cells per lane) were applied to SDS-PAGE and transferred to a PVDF membrane. The immunoblot was probed with mab NCAD-7E9 (0.5 µg/ ml) for 1h at RT and developed by ECL (exp. time: 30 sec). Lane 1: HeLa Lane 2: HepG2 Lane 3: HEK293 Lane 4: SH-SY5Y Lane 5: MDCK Lane 6: PC12 Lane 7: CMT 93 Lane 8: Neuro 2A Lane 9: 3T3