

Product datasheet for **AM00012PU-N**

M Cadherin (CDH15) (Extracell. Dom.) Mouse Monoclonal Antibody [Clone ID: 21G4]

Product data:

Product Type:	Primary Antibodies
Clone Name:	21G4
Applications:	ELISA, IF, WB
Recommended Dilution:	ELISA: 0.05 µg/ml. Immunocytochemistry: 5 µg/ml for Immunofluorescence. Western Blot: 0.5 µg/ml for HRPO/ECL detection. Recommended blocking buffer: Casein/Tween 20 based blocking and blot incubation buffer.
Reactivity:	Human
Host:	Mouse
Isotype:	IgG1
Clonality:	Monoclonal
Immunogen:	Recombinant extracellular domain of human M-cadherin. Epitope: Extracellular domain.
Specificity:	This antibody is directed against the extracellular domain of Human M-Cadherin .
Formulation:	1ml 2 x PBS containing 0.09% Sodium Azide, PEG and Sucrose State: Purified State: Lyophilized purified IgG fraction
Reconstitution Method:	Restore with 1 ml H ₂ O (15 min, RT).
Purification:	Size Exclusion Chromatography
Conjugation:	Unconjugated
Storage:	Store lyophilized at 2-8°C for 6 months or at -20°C long term. After reconstitution store the antibody undiluted at 2-8°C for one month or (in aliquots) at -20°C long term. Avoid repeated freezing and thawing.
Stability:	Shelf life: one year from despatch.
Predicted Protein Size:	130 kDa
Gene Name:	cadherin 15



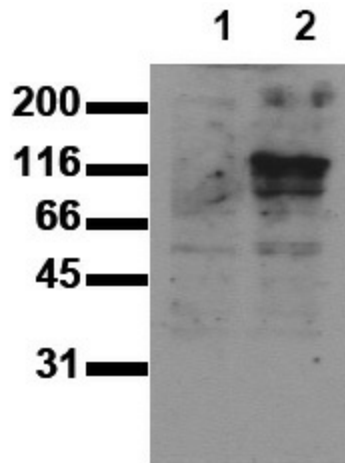
[View online »](#)

Database Link: [Entrez Gene 1013 Human P55291](#)

Background: Cadherins are a family of transmembrane glycoproteins that play a key role in calcium-dependent cell-cell adhesion. Several members of the cadherin family have been identified so far, including E- (epithelial), P- (placental), N- (neuronal), and M- (muscle) cadherin. M-cadherin is expressed in myoblasts and might be involved in skeletal muscle cell differentiation.

Synonyms: Muscle cadherin, Cadherin-14, CDH15, CDH14, CDH3, Cadherin M, M-Cadherin

Product images:



Detection of M-Cadherin: Whole cell lysates were applied to SDS-PAGE and transferred to a PVDF membrane. The immunoblot was probed with mab MCAD-21G4 (0.5 ug/ ml) for 1h at RT and developed by ECL (exp. time: 30 sec). Lane 1: COS-7, Lane 2: Human M-Cadherin overexpressed in COS-7 cells