

Product datasheet for **AM00011PU-N**

Cadherin-15 (Extracell. Dom.) Mouse Monoclonal Antibody [Clone ID: 12G4]

Product data:

Product Type:	Primary Antibodies
Clone Name:	12G4
Applications:	ELISA, IF, WB
Recommended Dilution:	ELISA: Use at 0.05 µg/ml. Western Blot (Immunoblotting): 0.5 µg/ml for HRPO/ECL detection. <i>Recommended blocking buffer:</i> Casein/Tween 20 based blocking and blot incubation buffer. Immunocytochemistry: 5 µg/ml.
Reactivity:	Mouse
Host:	Mouse
Isotype:	IgG1
Clonality:	Monoclonal
Immunogen:	Recombinant extracellular domain of Murine M-Cadherin
Specificity:	This antibody is directed against the extracellular domain of Murine M-Cadherin (MW: 130 kDa).
Formulation:	1 ml 2 x PBS containing 0.09% Sodium Azide, PEG and Sucrose. State: Purified State: Lyophilized purified IgG fraction.
Reconstitution Method:	Restore with 1 ml H ₂ O (15 min, RT).
Purification:	Subsequent Thiophilic Adsorption and Size Exclusion Chromatography.
Conjugation:	Unconjugated
Storage:	Store lyophilized (preferably in a desiccator) at -20°C and reconstituted (aliquote and freeze in liquid nitrogen) at -80°C. Avoid repeated freezing and thawing. Thaw aliquots at 37°C. Thawed aliquots may be stored at 4°C up to 3 months.
Stability:	Shelf life: one year from despatch.
Predicted Protein Size:	130 kDa
Gene Name:	cadherin 15



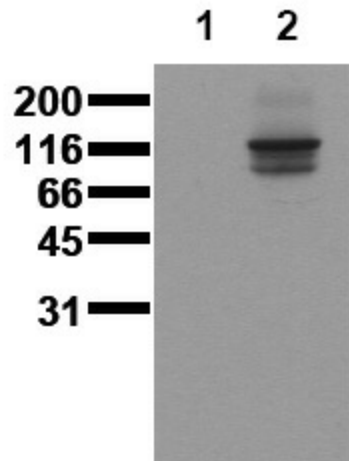
[View online »](#)

Database Link: [Entrez Gene 12555 Mouse P33146](#)

Background: Cadherins are a family of transmembrane glycoproteins that play a key role in calcium-dependent cell-cell adhesion. Several members of the cadherin family have been identified so far, including E- (epithelial), P- (placental), N- (neuronal), and M- (muscle) cadherin. M-cadherin is expressed in myoblasts and might be involved in skeletal muscle cell differentiation.

Synonyms: Muscle cadherin, Cadherin-14, CDH15, CDH14, CDH3, Cadherin M, M-Cadherin

Product images:



Detection of M-Cadherin: Whole cell lysates were applied to SDS-PAGE and transferred to a PVDF membrane. The immunoblot was probed with mab MCAD-12G4 (0.5 g/ ml) for 1h at RT and developed by ECL (exp. time: 30 sec). Lane 1: 10T1/2, Lane 2: Mouse M-Cadherin