

Product datasheet for **AB240241-100**

CD2

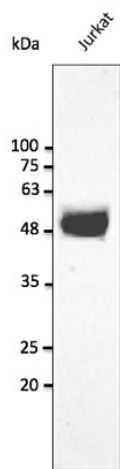
Product data:

Product Type:	Primary Antibodies
Applications:	WB
Recommended Dilution:	WB 1:500-1:5,000
Reactivity:	Canine, Human, Monkey, Mouse, Rat
Host:	Goat
Isotype:	IgG
Clonality:	Polyclonal
Immunogen:	Recombinant peptide derived from within residues 300 aa to the C-terminus of human CD2 produced in E. coli.
Formulation:	Polyclonal antibody supplied as a 100 µl (4 mg/ml) aliquot in PBS, 20% glycerol and 0.05% sodium azide.
Concentration:	4mg/ml
Purification:	epitope affinity purified
Gene Name:	CD2 molecule
Database Link:	NP_001758 Entrez Gene 12481 Mouse Entrez Gene 497761 Rat Entrez Gene 914 Human
Background:	CD2 molecule
Synonyms:	FLJ46032; LFA-2; SRBC; T11
Note:	Detects endogenous levels of CD2 by Western blot.
Protein Families:	Druggable Genome, Transmembrane
Protein Pathways:	Cell adhesion molecules (CAMs), Hematopoietic cell lineage



[View online »](#)

Product images:



Anti-CD2 Ab at 1/2, 500 dilution; lysates at 50 ug per lane; rabbit polyclonal to goat IgG (HRP) at 1/10,000 dilution;