

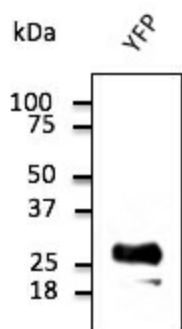
## Product datasheet for **AB1166-100**

### YFP

#### Product data:

Product Type:	Primary Antibodies
Applications:	IF, WB
Recommended Dilution:	WB 1:500-1:2,000; IF 1:50-1:1,000; IHC (paraffin) 1:50-1:1,000; IHC (frozen) 1:50-1:1,000
Host:	Goat
Isotype:	IgG
Clonality:	Polyclonal
Immunogen:	Purified recombinant peptide produced in E. coli.
Formulation:	Polyclonal antibody supplied as a 100 µl (3 mg/ml) aliquot in PBS, 20% glycerol and 0.05% sodium azide.
Concentration:	3mg/ml
Purification:	epitope affinity purified
Background:	Yellow Fluorescent Protein
Note:	In 293HEK cells transfected with cds plasmid detects a band of 27 kDa by Western blot. This antibody also recognizes GFP and does not recognize mCherry/red fluorescent protein.

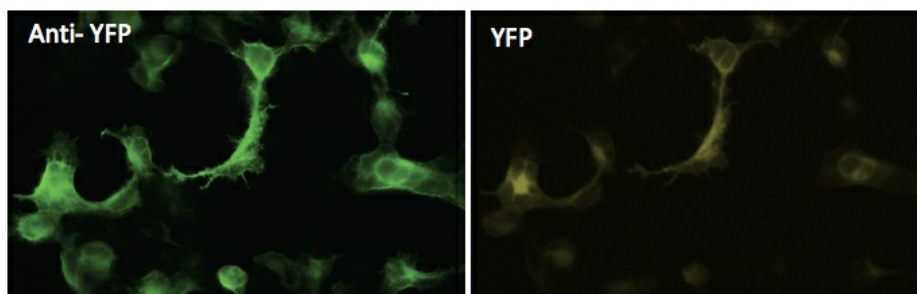
#### Product images:



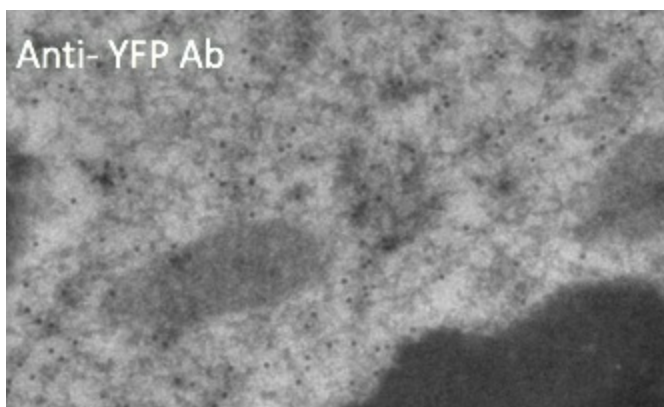
Anti-YFP Ab at 1/2,000 dilution; 293HEK cells transduced with YFP Ad; lysates at 50 µg per lane; rabbit polyclonal to goat IgG (HRP) at 1/10,000 dilution;



[View online »](#)



Immunofluorescence – anti-YFP Ab in 293HEK cells transfected with YFP at 1/50 dilution; cells were fixed with 4% of PFA;



Immunogold labeling of epithelium cells, in vivo injected with YFP expressing vector;