

Product datasheet for **AB0291-100**

NCL

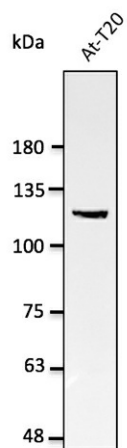
Product data:

Product Type:	Primary Antibodies
Applications:	WB
Recommended Dilution:	WB 1:1,000-1:5,000
Reactivity:	Canine, Human, Monkey, Mouse, Rat
Host:	Goat
Isotype:	IgG
Clonality:	Polyclonal
Immunogen:	Purified recombinant peptide derived from within residues 500 aa to the C-terminus of human NCL produced in E. coli.
Formulation:	Polyclonal antibody supplied as a 100 µl (1 mg/ml) aliquot in PBS, 20% glycerol and 0.05% sodium azide.
Concentration:	1 mg/ml
Purification:	epitope affinity purified
Gene Name:	nucleolin
Database Link:	NP_005372 Entrez Gene 17975 Mouse Entrez Gene 25135 Rat Entrez Gene 720965 Monkey Entrez Gene 4691 Human
Background:	Nucleolin
Synonyms:	C23; FLJ45706; FLJ59041; nucleolin
Note:	Detects endogenous levels of NCL by Western blot.
Protein Families:	Druggable Genome, Stem cell - Pluripotency
Protein Pathways:	Pathogenic Escherichia coli infection



[View online »](#)

Product images:



Anti-NCL Ab at 1/2, 500 dilution; lysates at 50 ug per lane; rabbit polyclonal to goat IgG (HRP) at 1/10,000 dilution;