

Product datasheet for **AB0287-100**

SNCG

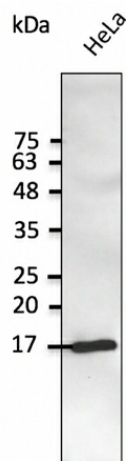
Product data:

| | |
|-----------------------|-----------------------------------------------------------------------------------------------------------------------------------------------------|
| Product Type: | Primary Antibodies |
| Applications: | WB |
| Recommended Dilution: | WB 1:500-1:5,000 |
| Reactivity: | Canine, Human, Monkey, Mouse, Rat |
| Host: | Goat |
| Isotype: | IgG |
| Clonality: | Polyclonal |
| Immunogen: | Purified recombinant peptide derived from within residues 80 aa to the C-terminus of human SNCG produced in E. coli. |
| Formulation: | Polyclonal antibody supplied as a 100 µl (3 mg/ml) aliquot in PBS, 20% glycerol and 0.05% sodium azide. |
| Concentration: | 3mg/ml |
| Purification: | epitope affinity purified |
| Gene Name: | synuclein gamma |
| Database Link: | <u>NP_003078 Entrez Gene 20618 Mouse</u> <u>Entrez Gene 64347 Rat</u> <u>Entrez Gene 6623 Human</u> |
| Background: | Synuclein gamma |
| Synonyms: | BCSG1; PERSYN; PRSN; SR; Synoretin |
| Note: | Detects endogenous levels of SNCG by Western blot. This Ab is specific for SNCG and does not recognizes SNCA and SNCB proteins. |



[View online »](#)

Product images:



Anti-SNCG Ab at 1/2, 500 dilution; lysate at 50 ug per lane; rabbit polyclonal to goat IgG (HRP) at 1/10,000 dilution;