

Product datasheet for **AB0283-100**

STUB1

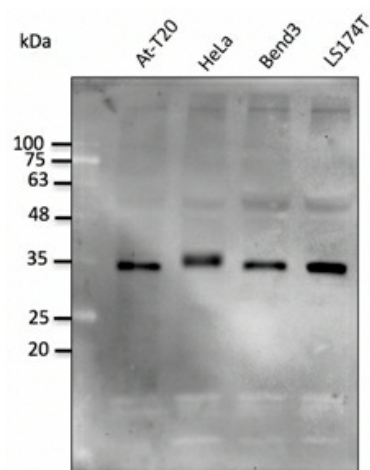
Product data:

Product Type:	Primary Antibodies
Applications:	WB
Recommended Dilution:	WB 1:500-1:5,000
Reactivity:	Canine, Human, Monkey, Mouse, Rat
Host:	Goat
Isotype:	IgG
Clonality:	Polyclonal
Immunogen:	Purified recombinant human STUB1 protein produced in E. coli.
Formulation:	Polyclonal antibody supplied as a 100 µl (3 mg/ml) aliquot in PBS, 20% glycerol and 0.05% sodium azide.
Concentration:	3mg/ml
Purification:	epitope affinity purified
Gene Name:	STIP1 homology and U-box containing protein 1
Database Link:	NP_005852 Entrez Gene 56424 Mouse Entrez Gene 287155 Rat Entrez Gene 10273 Human
Background:	STIP1 homology and U-box containing protein 1, E3 ubiquitin protein ligase
Synonyms:	CHIP; HSPABP2; NY-CO-7; SDCCAG7; UBOX1
Note:	Detects endogenous levels of STUB1 by Western blot.
Protein Families:	Druggable Genome
Protein Pathways:	Ubiquitin mediated proteolysis



[View online »](#)

Product images:



Anti-STUB1 Ab at 12,500 dilution; lysates at 50 ug per lane; rabbit polyclonal to goat IgG (HRP) at 110,000 dilution;