

## Product datasheet for **AB0164-200**

### BAX

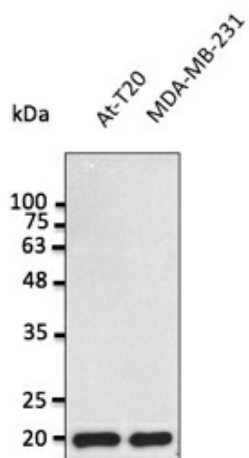
#### Product data:

Product Type:	Primary Antibodies
Applications:	IF, WB
Recommended Dilution:	WB 1:500-1:5,000; IF 1:50-1:250
Reactivity:	Canine, Human, Monkey, Mouse, Rat
Host:	Goat
Isotype:	IgG
Clonality:	Polyclonal
Immunogen:	Purified recombinant peptide derived from within residues 90 aa to the N-terminus of human BAX produced in E. coli.
Formulation:	Polyclonal antibody supplied as a 200 µl (2 mg/ml) aliquot in PBS, 20% glycerol and 0.05% sodium azide.
Concentration:	2mg/ml
Purification:	epitope affinity purified
Gene Name:	BCL2 associated X protein
Database Link:	<a href="#">NP_620118 Entrez Gene 12028 MouseEntrez Gene 24887 RatEntrez Gene 718948 MonkeyEntrez Gene 581 Human</a>
Background:	BCL2-associated X protein
Synonyms:	Bcl2-L-4; BCL2L4
Note:	Detects a band of approximately 21 kDa by Western blot in the following cell lysate: hCat, At-T20, MDA-MB-231, H69 and HUH.
Protein Families:	Druggable Genome, Transmembrane
Protein Pathways:	Amyotrophic lateral sclerosis (ALS), Apoptosis, Colorectal cancer, Huntington's disease, Neurotrophin signaling pathway, p53 signaling pathway, Pathways in cancer, Prion diseases

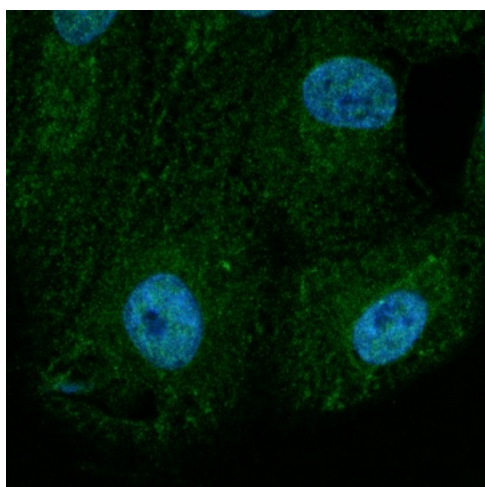


[View online »](#)

## Product images:



Anti-BAX Ab at 1:2, 500 dilution; 50 ug of total protein per lane; rabbit polyclonal to goat IgG (HRP) at 1/10,000 dilution;



Immunofluorescence - anti-BAX Ab at 1/100 dilution in NHI/3T3 cells; cells were fixed with methanol and permeabilized with 0.1% saponin;