

## Product datasheet for **AB0162-100**

### INSR

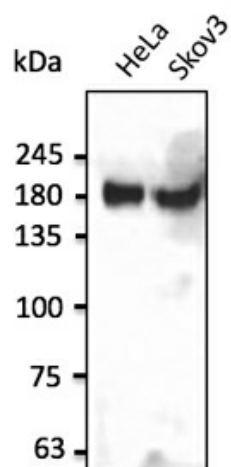
#### Product data:

Product Type:	Primary Antibodies
Applications:	WB
Recommended Dilution:	WB 1:500-1:5,000
Reactivity:	Canine, Human, Monkey, Mouse, Rat
Host:	Goat
Isotype:	IgG
Clonality:	Polyclonal
Immunogen:	Purified recombinant peptide within residues 1310 aa to the C-terminus of human INSR produced in E. coli.
Formulation:	Polyclonal antibody supplied as a 100 µl (3 mg/ml) aliquot in PBS, 20% glycerol and 0.05% sodium azide.
Concentration:	3mg/ml
Purification:	epitope affinity purified
Gene Name:	insulin receptor
Database Link:	<a href="#">NP_000199 Entrez Gene 16337 Mouse</a> <a href="#">Entrez Gene 24954 Rat</a> <a href="#">Entrez Gene 3643 Human</a>
Background:	Insulin receptor
Synonyms:	CD220; HHF5; IR
Note:	Using liver, HeLa and Skov3 cell lysates detects a 180 kDa band by Western blot.
Protein Families:	Druggable Genome, Protein Kinase, Transmembrane
Protein Pathways:	Adherens junction, Insulin signaling pathway, Type II diabetes mellitus



[View online »](#)

## Product images:



Endogenous INSR detected at 1/2, 500 dilution; lysate at 50 ug per lane and rabbit polyclonal to goat IgG (HRP) at 1/10,000 dilution.